

STAIRMASTER

4600PT Stepper

Parts Diagram

2003

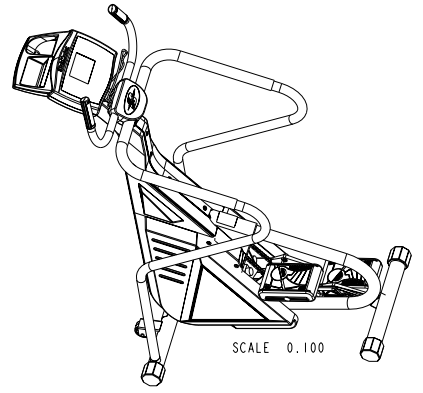
Pages 2-7

8			7			6			5			4			3		
BOM FOR ASSEMBLY 18000						BOM FOR ASSEMBLY 18000						BOM FOR ASSEMBLY 18000					
COMPONENT	DESCRIPTION	QTY	COMPONENT	DESCRIPTION	QTY	COMPONENT	DESCRIPTION	QTY	COMPONENT	DESCRIPTION	QTY	COMPONENT	DESCRIPTION	QTY	COMPONENT	DESCRIPTION	QTY
12297	ASSY, HANDLE, UPPER, 4600, GEN II	1	21530	HUB,ECCENTRIC,2400/4400	1	25978	WHEEL, 3 IN. DIA.	2	6. →								
13580	WASHER, #8 SAE FLAT	2	21531	shaft, first red	1	27827	ASSY, CABLE, C40 CL	1									
18002	weldment, neck, 4600	1	21578	GROMMET,NECK,2400/4400	1	27839	SUPPRESSOR, FERRITE TOROID	1									
18006	BRACKET, CONSOLE, LEFT, 4600	1	21590	BRACE,ALTERNATOR,4400 PT6/CL	1	(27775)	CONSOLE ASSEMBLY, C40	1	6. →								
18007	BRACKET, CONSOLE, RIGHT, 4600	1	21592	SPACER, ALTERNATOR, 4400 PT/CL	1												
18008	INSERT, HANDRAIL, 4600	1	21597	PULLEY,ALTERNATOR,1.044 DIA	1												
18012	COVER, LOWER, RH, 4600	1	21600	bearing, ball, 17mm x 30mm	2												
18013	COVER,LOWER,LH, 4600	1	21616	INSERT,NECK,2400/4400	1												
18014	WELDMENT,MAIN FRAME,4600	1	21654	key, woodruff, #605, .188, .625	1												
18016	assy, handrail, left, w/grip, 4600	1	21657	WASHER,THRUST, .688 X .125	3												
18017	assy, handrail, right, w/grip, 4600	1	21673	INSTRUCT.,INSTALL INJ MOLD CVR	1	8. →											
18019	extrusion, handrail, 4600	1	21774	PIN,HITCH	2												
18021	SPACER, CONSOLE, 4600	1	21793	ASSY,PEDAL,RH,CL,SYS,V2	1												
18024	COVER,UPPER,RH, 4600	1	21794	ASSY,PEDAL,LH,CL,SYS,V2	1												
18025	COVER,UPPER,LH, 4600	1	22026	SCREW, 1/4-20 X 1.00, HEX HD CAP	8												
18027	ASSY, CONSOLE KNOB, 4600	1	22027	WASHER, .250 SPLIT LOCK	2												
18028	SCREW, .250-20 NC X 1.75 SOC HD CAP	4	22029	NUT, .375-16, NYLON INSERT	1												
18030	SHIELD, NECK, TOP	1	22030	WASHER, 3/8 USS FLAT	4												
18031	SHIELD, NECK, BOTTOM	1	22032	NUT, 5/16-18 NC NYLON INSERT HEX	2												
18048	DECAL, COVER, SIDE, 4600 PT	2	22036	NUT .25/20 NYLON INSERT	10												
18072	RIVET, PERM.	19	22047	WASHER, .250, FLAT	11												
20006	SPROCKET,BS14 #41 CHAIN	1	22070	WASHER, .312 SPLIT LOCK	1												
20008	LINK,MASTER,#41	1	22075	WASHER, .312 USS FLAT	9												
20157	LINK,MASTER,#40	2	22093	SCREW, .312-18 X .75, HEX HD CAP	5												
20188	MOUNT,SHOCK	2	22116	SCREW, 1/4-20 X 2.50, HEX HD CAP	2												
20195	BEARING, CLUTCH	2	22138	WASHER, .250 INTERNAL LOCK	6	6. →											
20196	BEARING,NEEDLE 1 ID X1-1/4 OD X1/2	2	22140	WASHER,OD1.00, ID.63	2												
20197	WASHER, THRUST	8	22141	SNAPRING OD.715, ID.595	2												
20198	BEARING, THRUST	4	22143	SNAPRING, .375	2												
20199	CHAIN, STEP	2	22150	SCREW,#10-24 X .38 ZINC PLATED	1												
20205	ALTERNATOR	1	22175	SCREW, .250-20 X 3.00, HEX HD CAP	1												
20206	SNAPRING,OD1.125, ID.906	1	22191	WASHER, SHOULDER, .38	2												
20213	RING, SNAP, .75	2	22272	PAD, PEDAL, LH	1												
20214	SNAPRING, .375	2	22273	PAD, PEDAL, RH	1												
20267	TERMINAL, #10 RING, 14-16 AWG	1	22276	SCREW,#6 SELFTAPPINGX.625 HEX OR TORX	2												
20423	TYRAP,1/8 X 7.515	3	22326	PIN, CLEVIS	2												
7. →	20507	POWER CORD,EUROPEAN	1	22347	chain,transmission	1											
	20574	ADAPTER, HANDRAIL, 4000	2	22375	DECAL, S/N, BC, 1.6 X 1.5	1	9. →										
	20576	SPROCKET,13T	2	22569	MANUAL,OWNER'S,42/4400PT/CL,ENG	1	8. →										
	20768	CONNECTOR, SPRING CHAIN	2	22663	SCREW, #6 X .50, PHIL TYPE T	4											
	20785	ASSY, DRIVE SHAFT, SPRING PIN	1	22847	RIVET, KIT(10 PER)	1	8. →										
	20787	HUB,DRIVE,PM	1	22878	SET SCREW, .25-28X.38	1											
12. →	21017	DECAL,CAUTION,4000PT/CT,ENGLISH	1	22983	WASHER, SHOULDER, .25 ID	4											
	21093	SPRING,PETAL RETURN	2	23054	NUT, #8-32, NYLON INSERT	2											
	21146	GROMMET, GRO-1-UL	2	23354	SNAP RING, 17MM	1											
	21192	RETAINER,PEDAL CHAIN	2	23638	WASHER, SPACER	2											
	21204	ASSY, FIELD, DIODE	1	23719	pin, roll, 3/16x1.5	1											
13. →	21273	DECAL,DISTRIBUTOR,GERMAN	1	23816	LABEL,WARNING,POWER CONNECTOR	1	11. →										
	21298	LINK,DOUBLE PITCH W/SLEEVE	2	23842	SPROCKET,8MM,HTD,80 TOOTH	1											
	21349	ASSY, ARM, LEVELING	2	23853	TOOL, REMOVAL, COVER FASTENERS	1	8. →										
	21350	ASSY,ARM,PEDAL,L.H.,PB	1	24000	PULLEY,HTD,POLY-V, 8.00 DIA	1											
	21351	ASSY,ARM,PEDAL,R.H.,PB	1	24271	SCREW, .312-18 X 3.00, HEX HD CAP	2											
	21366	WASHER,THRUST,.63 ID	4	24307	CONNECTOR, POWER	1											
	21448	SCREW, .375-16 X 4.50, HEX HD CAP	1	24323	CLIP,CABLE,ADHESIVE BACKING	3											
	21449	SCREW, .25-20X 4.00 HEX	1	24326	DECAL,DOM COMPLIANCE	1	12. →										
	21462	WASHER,FLAT,.375	4	24381	P/S,PS-7.3 PIN	1	6. →										
	21463	SNAPRING, .375,SS	2	24640	SCREW, 3/8-16 X 1.75, HEX HD CAP	2											
	21487	DECAL,LEG LEVELING	1	24666	bracket, mounting, covers	2											
	21514	COVER,MID	1	24747	bearing,needle,17x23x12	2											
	21518	belt, poly-v, 430j6	1	25079	SCREW, #8 X 3/8 LG, TYP A, PAN/HD, PH	2											
	21519	PULLEY,SPRING,4200/4400	2	25454	SCREW, .25-20 X .75, HEX	4											
	21529	belt,htd,8mm,80mm	1	25690	RESISTOR	1											

Digitally signed by
CATHY CLARK
cn=CATHY
CLARK,
o=STAIRMASTER,
c=US
Date: 2003.02.12
15:28:23 -0600
Reason:
Document is released

NOTES:

- DELETED
- APPLY BEARING GREASE PRIOR TO ASSEMBLY.
- LUBRICATE WITH GREASE BEFORE ASSEMBLING: STEP CHAIN CONNECTION POINTS, PEDAL ARM SHAFTS, LEVELING ARM SHAFTS, SPRING PULLEY SHAFTS, AND PEDAL SHAFTS.
- LUBRICATE WITH 10W-30 WT OIL: STEP CHAIN, RETURN SPRING, TRANSMISSION CHAIN, AND SPRING PULLEY EXTERIOR (LIGHTLY)
- CENTER 6 GROOVE POLY-V BELT IN MIDDLE OF ALTERNATOR AND POLY-V PULLEYS.
- MODEL LEVEL ITEM, REFERENCE MODEL LEVEL BOMS.
- MODEL LEVEL ITEMS, POWER ADAPTER (20859 JAPAN ONLY) AND POWER CORD (EUROPEAN SHOWN FOR REFERENCE) ARE FOR INTERNATIONAL 220V APPLICATIONS AS ADDITIONAL NON-INSTALLED PARTS TO REPLACE EXISTING POWER CORD AT TIME OF INSTALLATION.
- MODEL LEVEL ITEMS, OWNERS MANUAL (ENGLISH SHOWN FOR REFERENCE), FASTENERS (10872) AND REMOVAL TOOL (23853), AND COVER INSTALLATION INSTRUCTIONS ARE MODEL LEVEL ITEMS SHIPPED WITH MACHINE PER MANUFACTURING GUIDELINES.
- MODEL LEVEL ITEM, SERIAL NUMBER DECAL (22375) TO BE PLACED TOP CENTER OF TUBE, READABLE FROM FRONT OF MACHINE.
- MODEL LEVEL ITEM, PLACE CLIPS AGAINST RIBS AS SHOWN.
- MODEL LEVEL ITEM, 120V MACHINES ONLY.
- MODEL LEVEL ITEMS, DECALS SHOWN IN ENGLISH/DOMESTIC
- MODEL LEVEL ITEM, GERMAN DISTRIBUTION DECAL SHOWN FOR REFERENCE.
- WIND WIRE HARNESS 27827 THROUGH FERRITE (27839) FOUR TIMES AND SECURE WITH TYRAP (20423).
- TORQUE TO 21 FT. LBS.



TOLERANCES		UNLESS OTHERWISE SPECIFIED:	
.X ±.1	ANGLES:	1. DO NOT SCALE DRAWING	PROOF/PUR MGR
.XX ±.03	BENT ±.2"	2. ALL DIMENSIONS ARE IN INCHES	MG, ENGR
.XXX ±.010	MACHINED ±0°30'	3. ALL DIMENSIONS APPLY BEFORE PLATING OR COATING	DSHM, ENGR
		4. REMOVE ALL BURRS BREAK SHARP EDGES .020 MAX	ENGR, MGR
		5. ALL VIEWS 3RD ANGLE PROJECTION	

MATERIAL	N/A
FINISH	SEE CHART

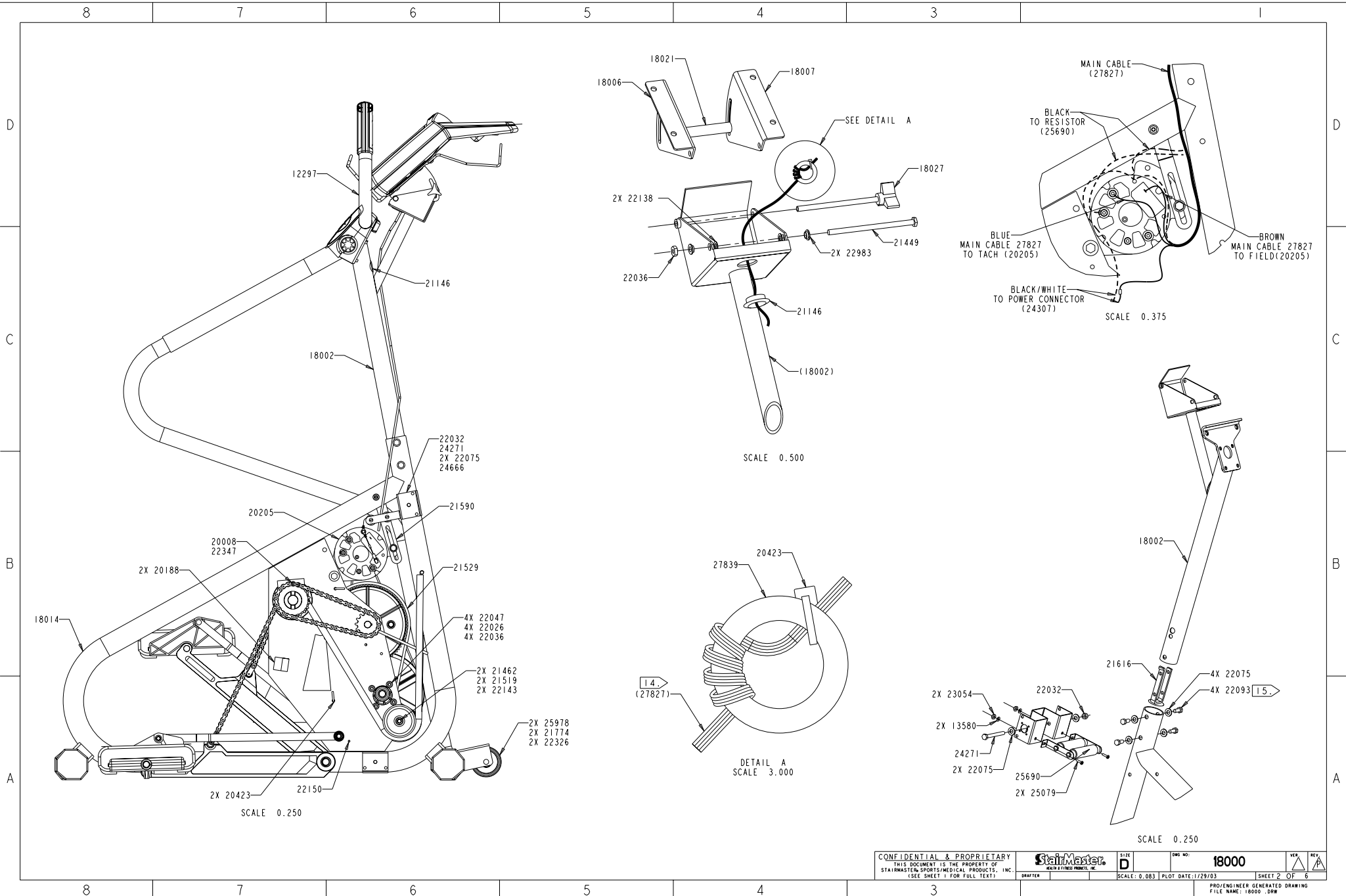
FINISH CHART		
P/N	DASH #	FINISH
	-00	NO FINISH
	-01	WHITE POWDERCOAT
	-02	TEXTURED BLACK POWDERCOAT
18000	-03	WRINKLE BLACK POWDERCOAT
	-04	GLOSS BLACK POWDERCOAT
	-05	OUTSIDE PROCESS, SEE NOTES

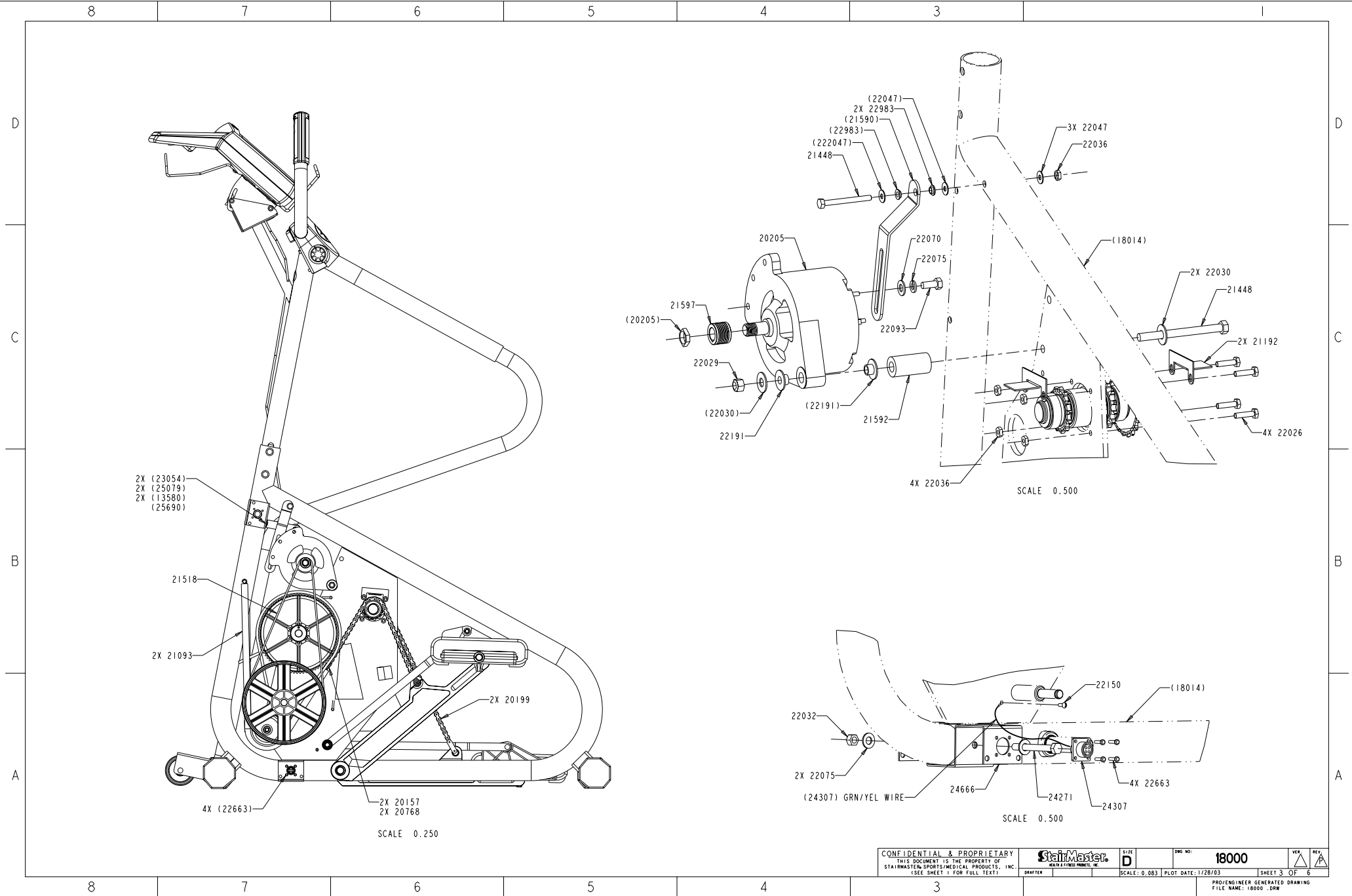
*NO SUFFIX ALSO DENOTES NO FINISH

StairMaster HEALTH & FITNESS PRODUCTS, INC.

ASSEMBLY, FINAL, 4600PT

SIZE: 18000
RELEASED FOR PRODUCTION: ECO #429
SCALE: 0.083 | PLOT DATE: 1/29/03 | SHEET 1 OF 6





8 7 6 5 4 3

D

C

B

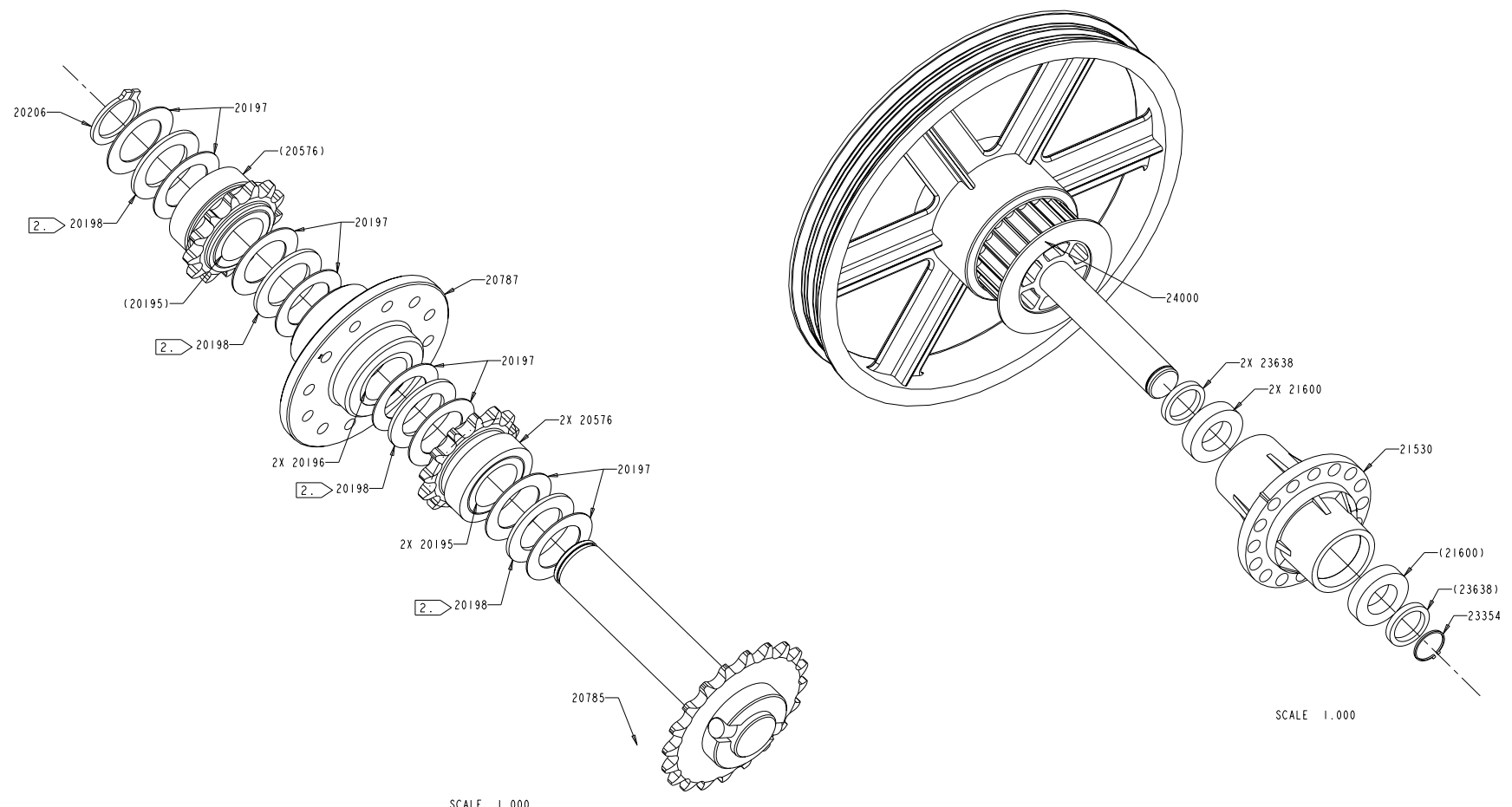
A

D

C

B

A



CONFIDENTIAL & PROPRIETARY THIS DOCUMENT IS THE PROPERTY OF STAINMASTER SPORTS/MEDICAL PRODUCTS, INC. (SEE SHEET 1 FOR FULL TEXT)			SIZE D	DWG NO: 18000	VER. 1	REV. 1
DRAWN	CHECKED	SCALE: 0.083	PLT DATE: 1/28/03	SHEET 4 OF 6		
PRO/ENGINEER GENERATED DRAWING FILE NAME: 18000.DWG						

8 7 6 5 4 3

8 7 6 5 4 3

D

C

B

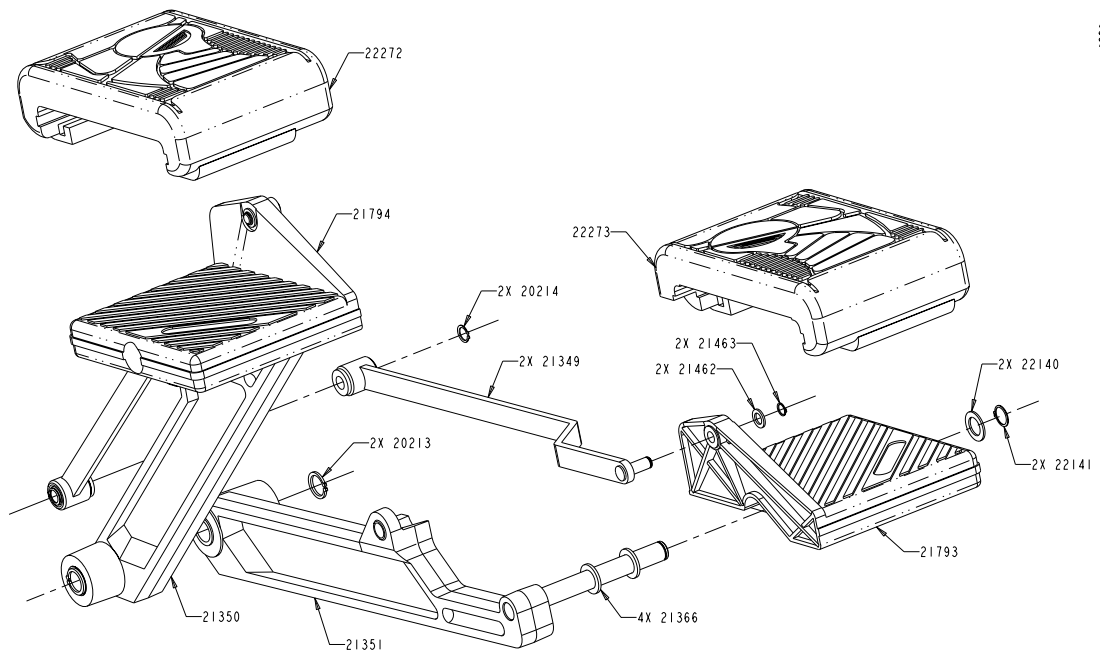
A

D

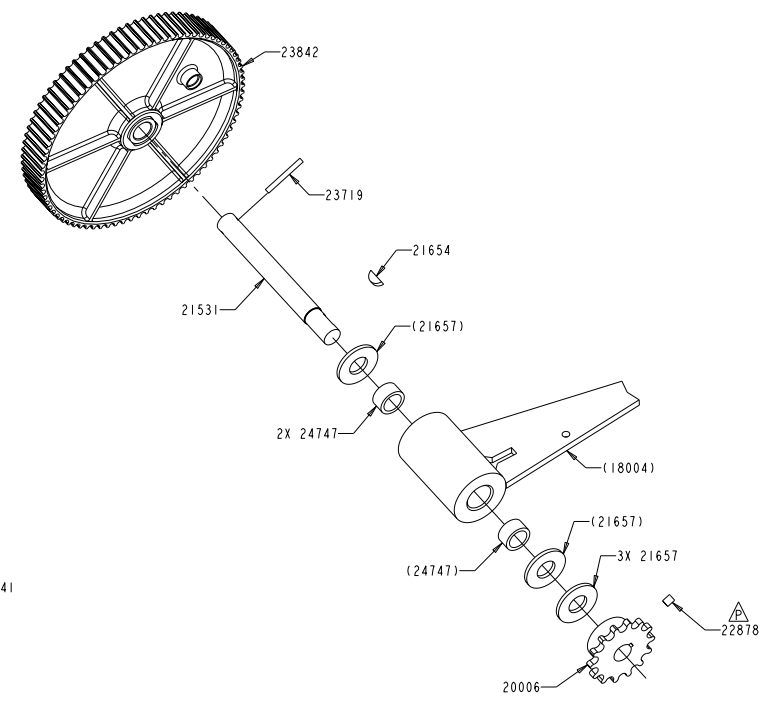
C

B

A



SCALE 0.500



SCALE 0.500

CONFIDENTIAL & PROPRIETARY THIS DOCUMENT IS THE PROPERTY OF STAINMASTER SPORTS/MEDICAL PRODUCTS, INC. (SEE SHEET 1 FOR FULL TEXT)			SIZE D	DWG NO: 18000	VER. 1	REV. 1
DRAWN	SCALE: 0.083	PLOT DATE: 1/29/03	SHEET 5 OF 6			

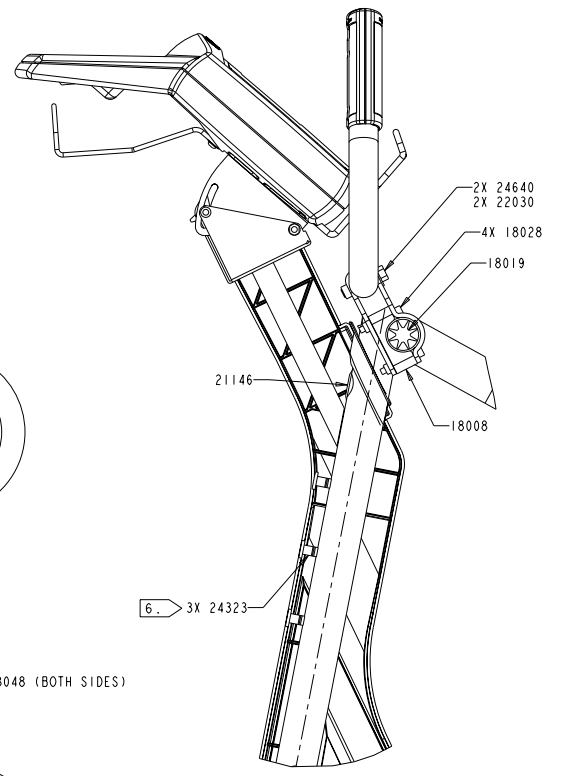
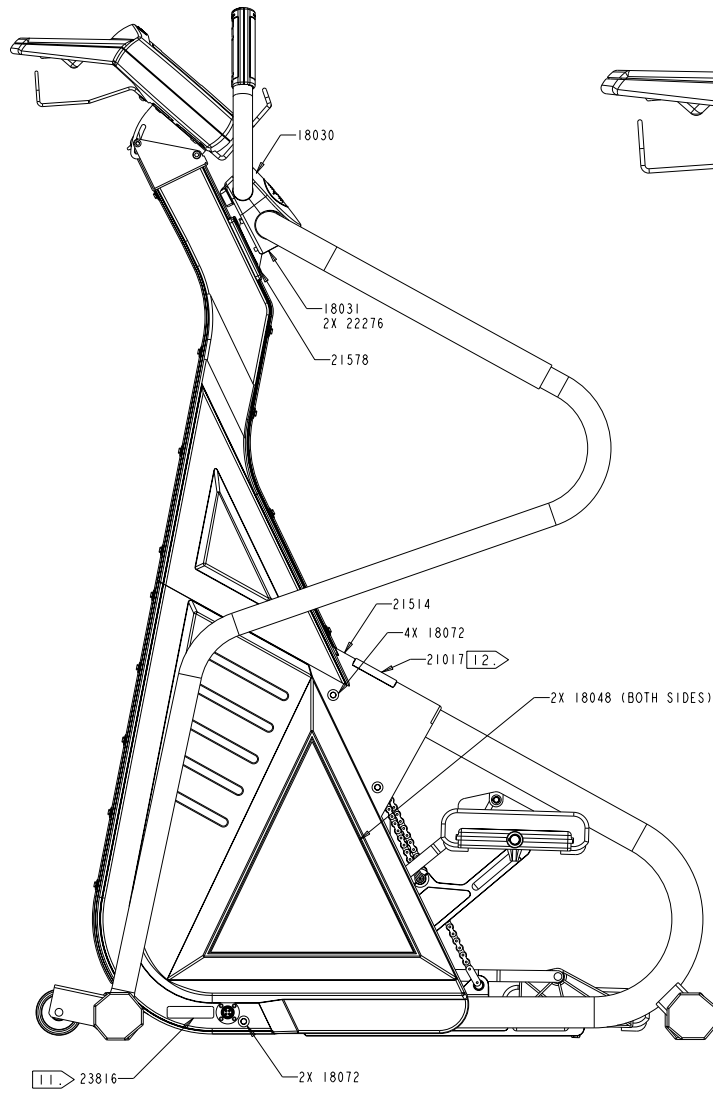
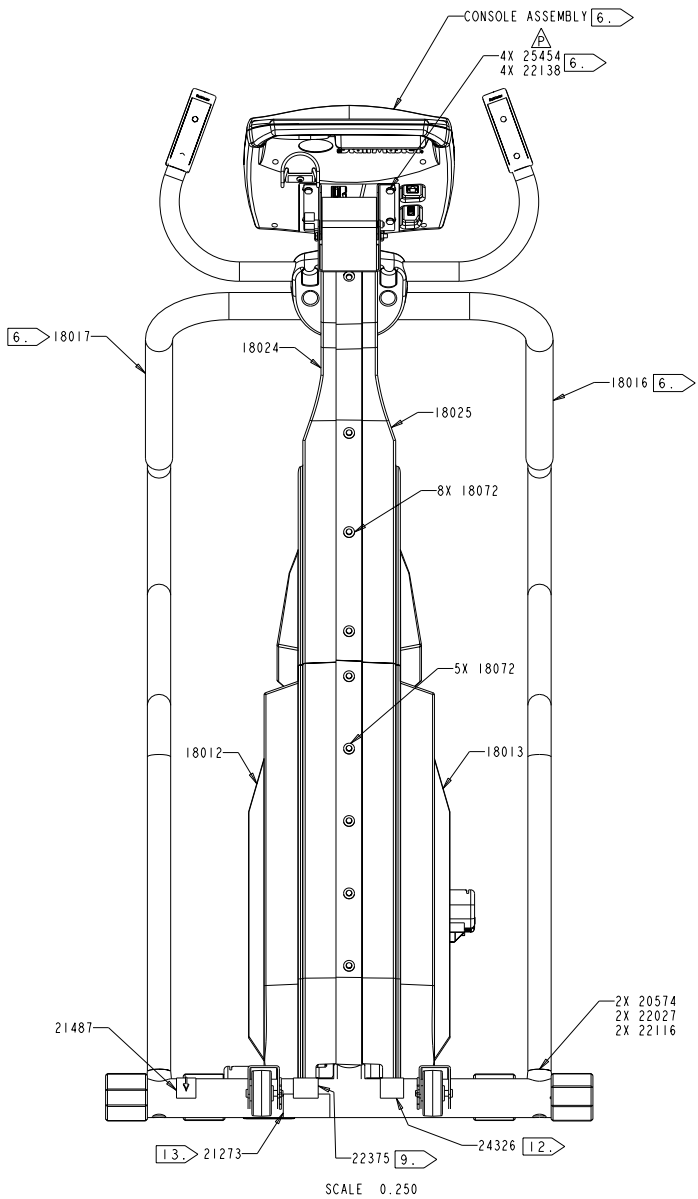
8 7 6 5 4 3

PRO/ENGINEER GENERATED DRAWING
FILE NAME: 18000.DWG

8 7 6 5 4 3 1

D
C
B
A

D
C
B
A



CONFIDENTIAL & PROPRIETARY			SIZE	DWG NO:	VER.	REV.
THIS DOCUMENT IS THE PROPERTY OF STAIRMASTER SPORTS/MEDICAL PRODUCTS, INC. (SEE SHEET 1 FOR FULL TEXT)			D	18000		
DRAWN	SCALE: 0.083	PLOT DATE: 1/29/03	SHEET 6 OF 6			
PRO/ENGINEER GENERATED DRAWING FILE NAME: 18000.DWG						

8 7 6 5 4 3 1

STAIRMASTER

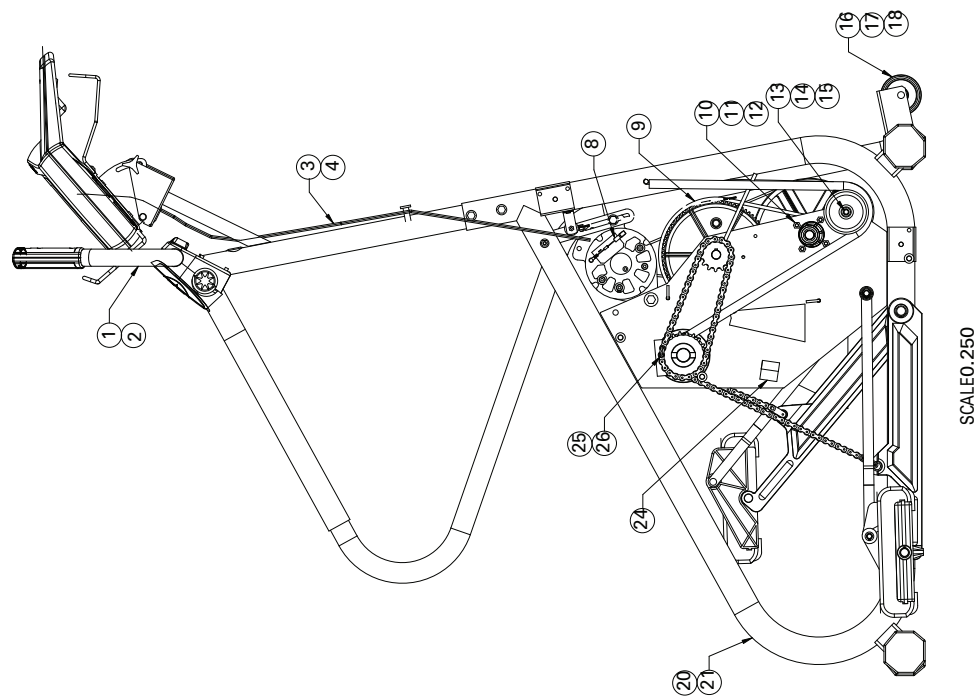
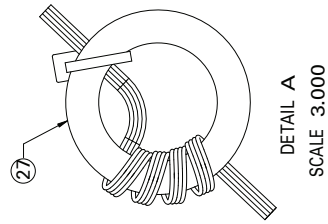
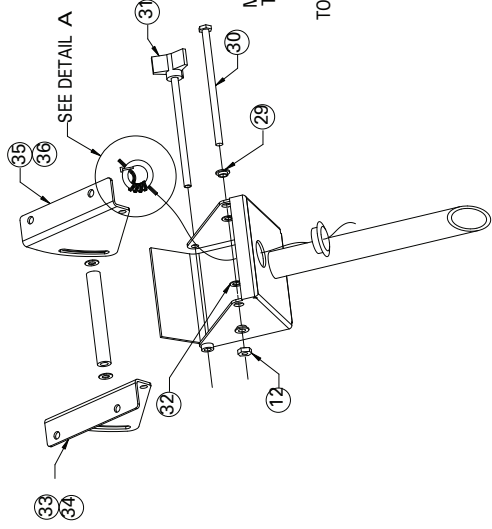
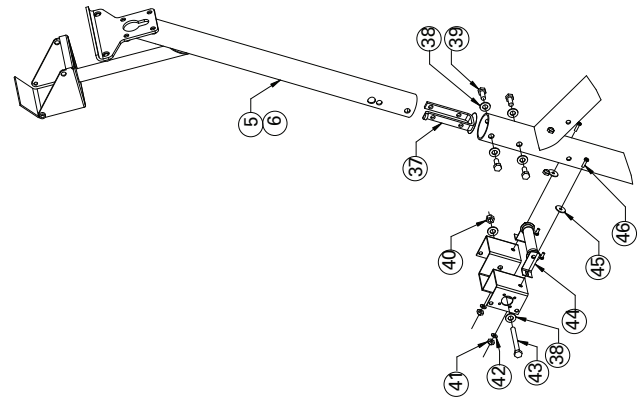
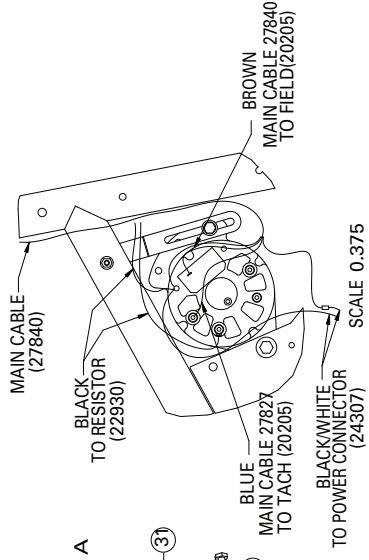
4600PT Stepper

Parts Diagram

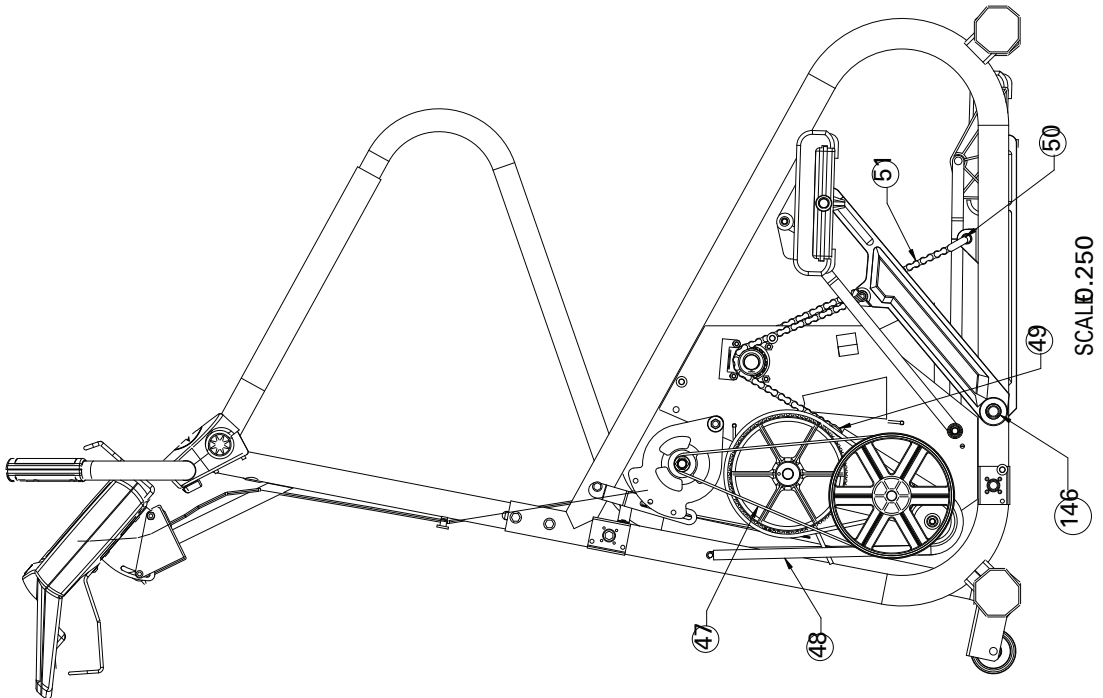
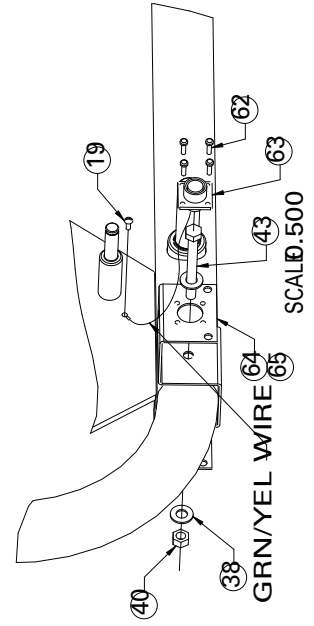
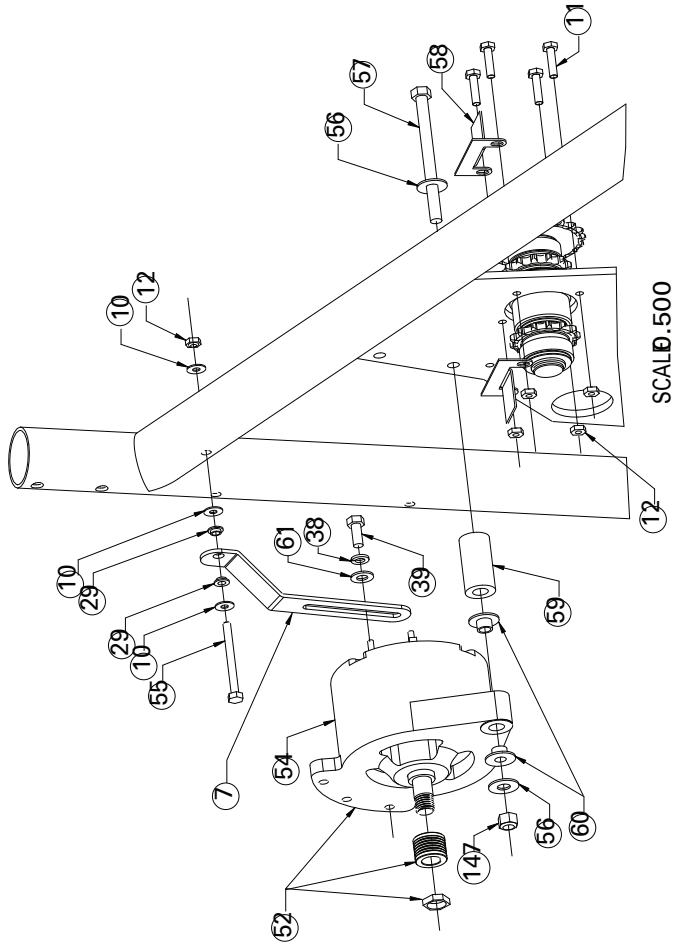
2007

Pages 9-16

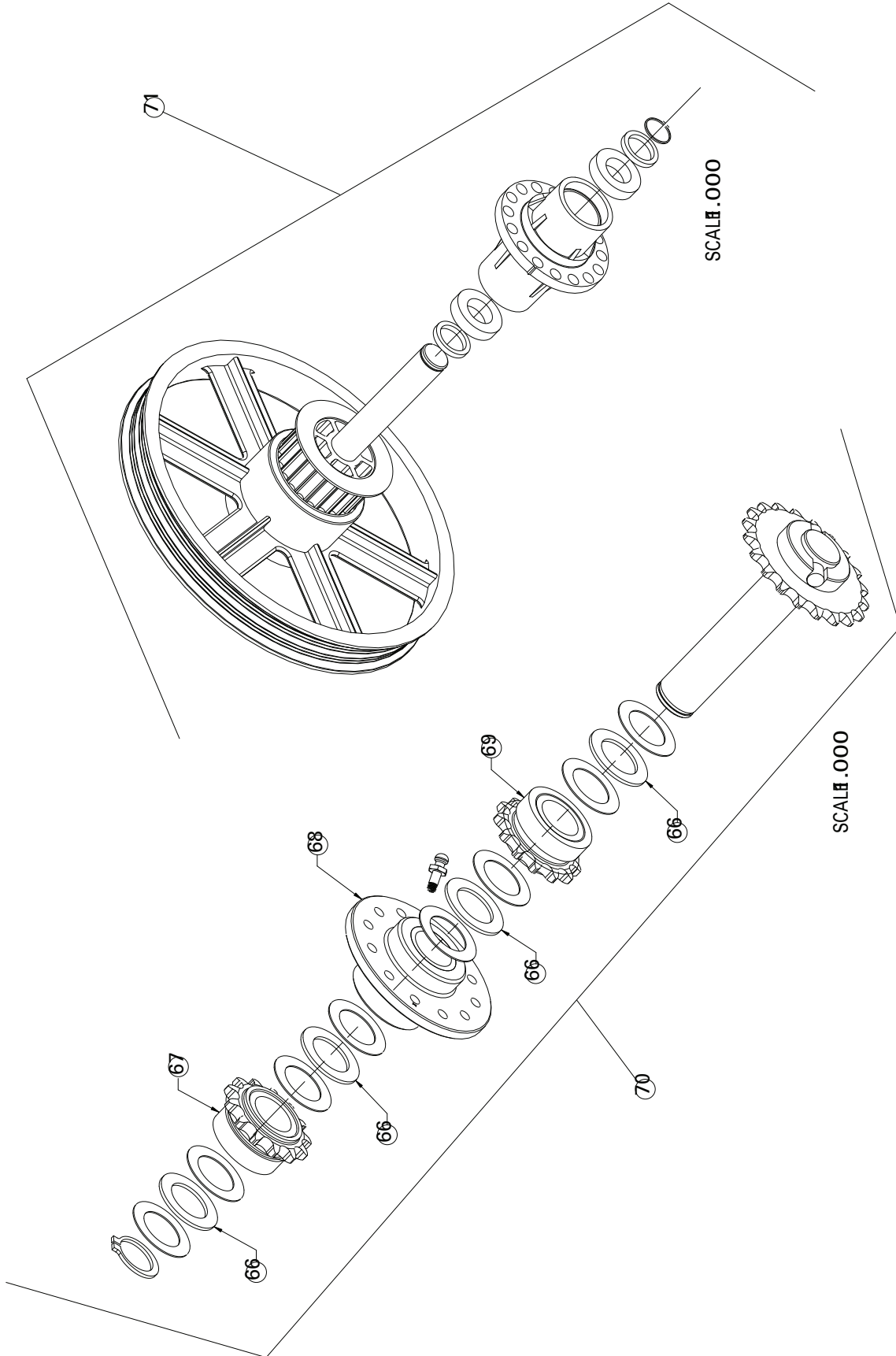
Stairmaster 4600 PT



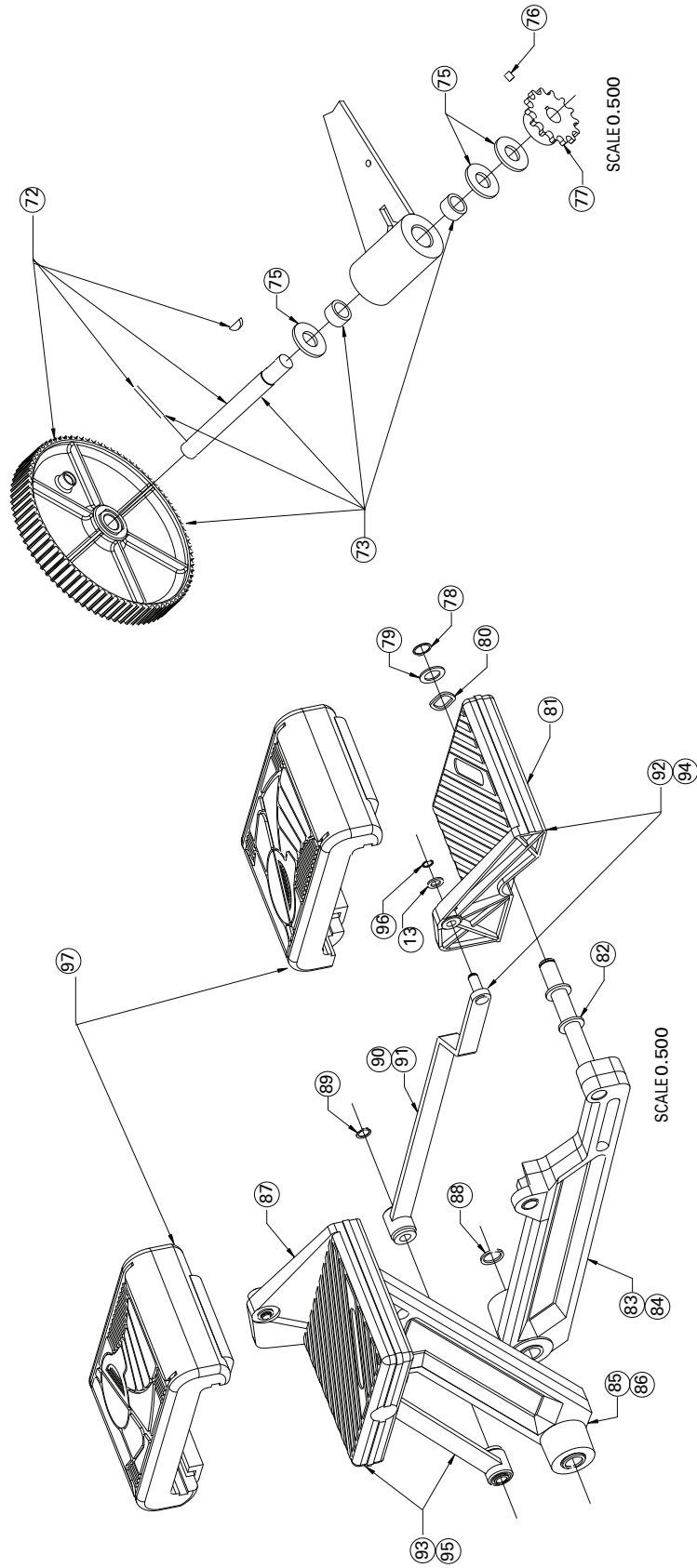
Stairmaster 4600 PT



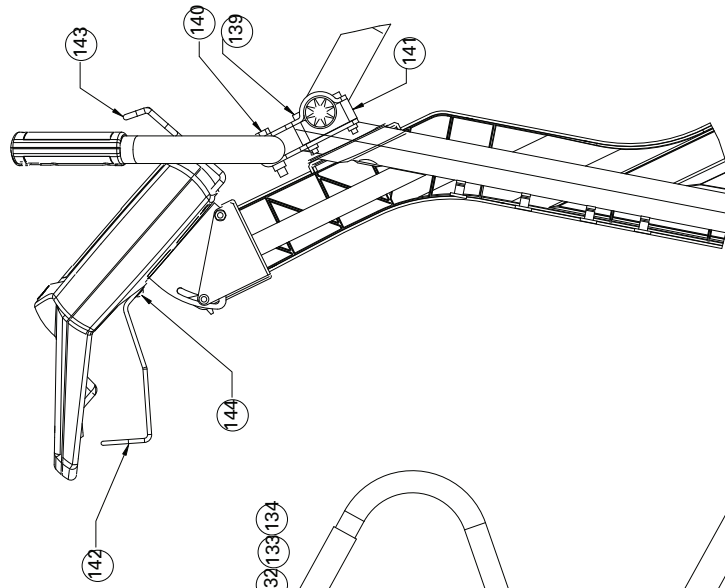
Stairmaster 4600 PT



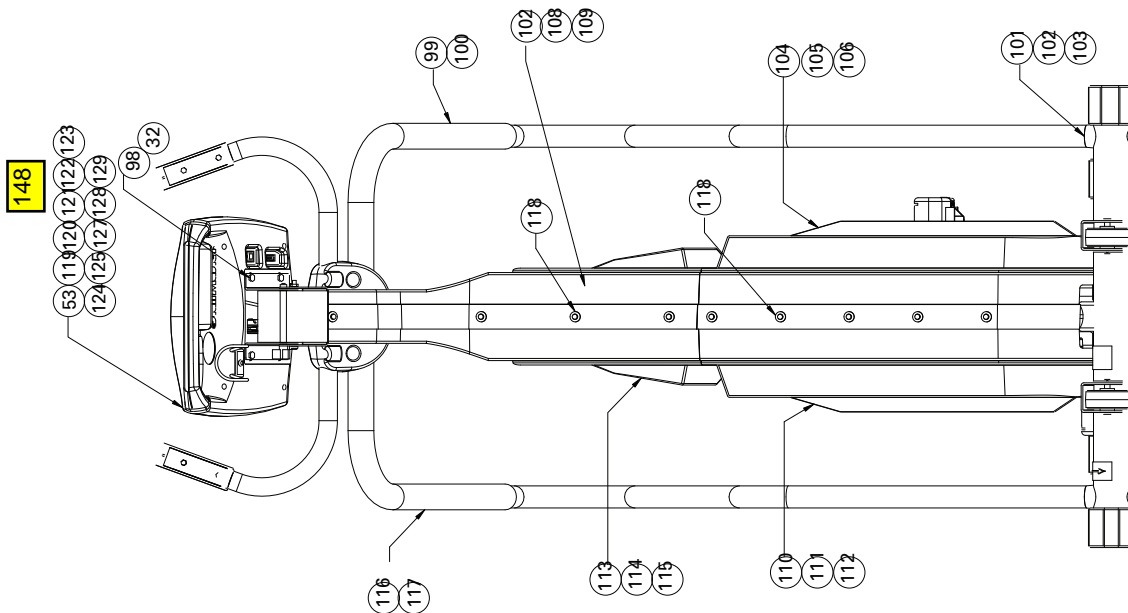
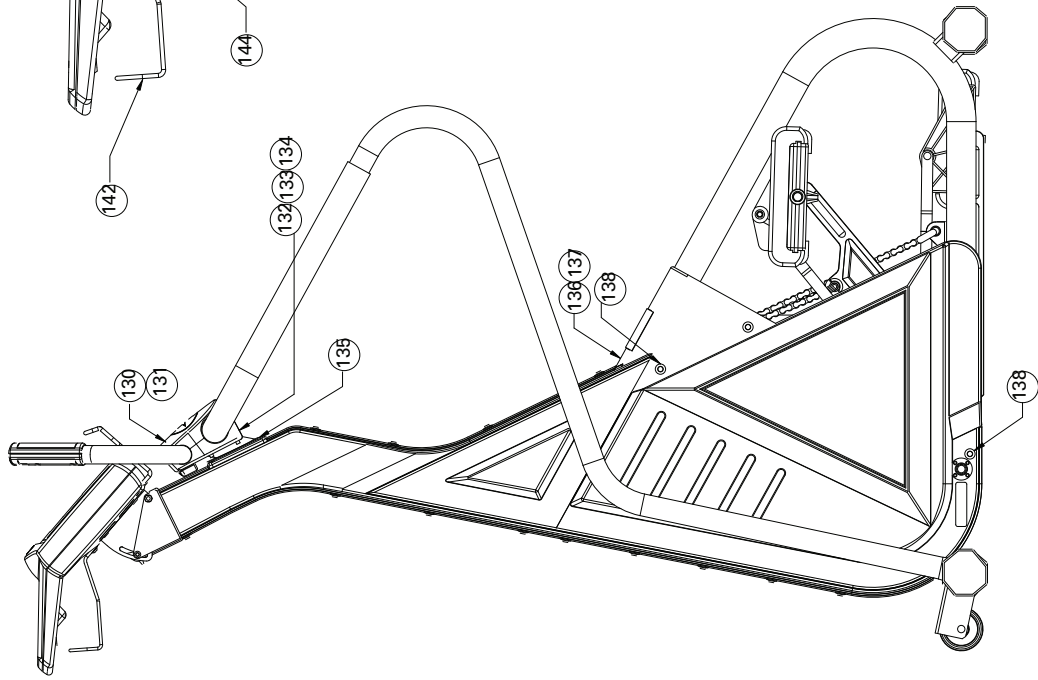
Stairmaster 4600 PT



Stairmaster 4600 PT

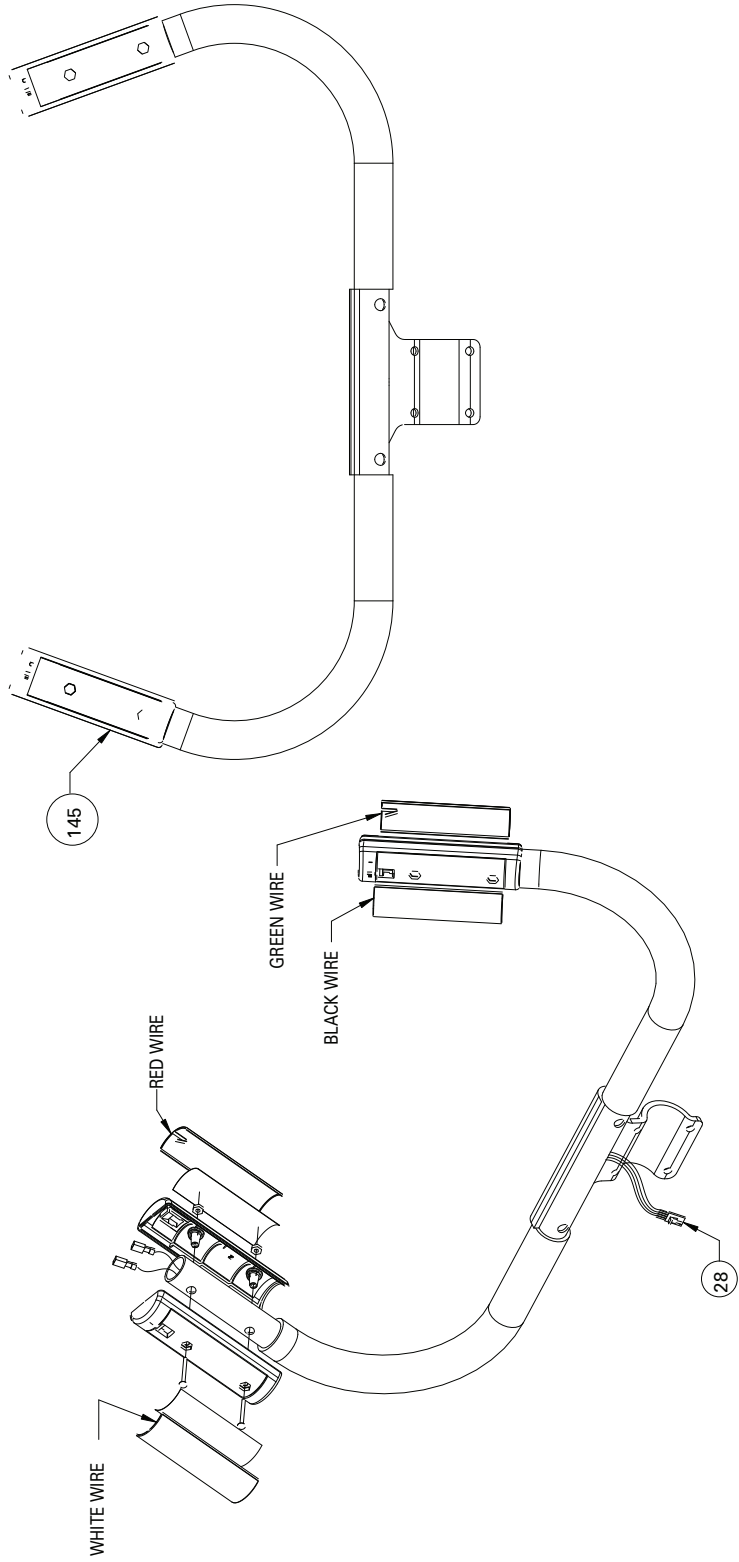


SCALE 0.375



SCALE 0.250

Stairmaster 4600 PT



- NOTES:
1. CONNECT WIRES TO CONTACT PLATES AS SHOWN.

Stairmaster 4600 PT

REF #	DESCRIPTION	PART #	REF #	DESCRIPTION	PART #
1	ASSEMBLY HANDLE, UPPER 4600, BLK	SM 12297-0 3	52	(CS)ASSY,ALT. PULLEY,4400PT T2	SM21508
2	ASSY,HNDLE,UPPER,STPPR,NLS, SILVER	SM2 5592	53	KIT, C40 OVERLAY, JAPANESE (BLACK CONSOLE)	SM27801
3	ASSY,MAIN CABLE,4400 PT,HM, PRE 8/0 1	SM2 1417	54	ALTERNATOR,PRESTOLITE, 1992	SM20205
4	ASSY,CABLE, C40 4400/4600PT, AFTER 8/0 1	SM27827	55	SCREW,,2 50-20X 3.00,HEX HD CAP	SM22175
5	WELDMENT,NECK,4600, BLK	SM18002-03	56	WASHER, 3/8 USS FLAT	SM22030
6	WELDMENT,NECK,STEPPER,NLS, SILVER	SM25594	57	SCREW,. 375-16 x 4. 50 HEX HD CP	SM21448
7	BRACE,ALTERNATOR,4400 PT/CL,WB	SM215 90-03	58	RETAINER, PEDAL CHAIN	SM2 1192
8	ASSY,FIELD,DIODE	SM21204	59	SPACER,ALTERNATOR,4400 PT/CL	SM215 92-0 5
9	BELT,HTD,8MM,800MM LONG	SM2 15 29	60	WASHER,SHOULDER,. 38 I.D.	SM22191
10	WASHER,FLAT, 1/4 ID X 5/8 OD	SM22047	61	WASHER,. 31 2 SPIT LOCK	SM22070
11	SCREW,,2 50-20X 1.00,HEX HD CAP	SM22026	62	SCREW,#6 X . 50 PHIL,TYPE T	SM22663
12	NUT,,2 50-20,NYLON INSERT	SM22036	63	ASSY,MAIN POWER HARNESS	SM24307
13	WASHER,FLAT,,38,SS	SM21462	64	BRACKET,MNT,CVR,CL SYS,CL,W/B	SM24666
14	PULLEY,SPRING,4200/4400	SM2 1519	65	BRACKET,MNT,CVR,CL SYS,CL, SILVER	SM25845
15	RING,SNAP, 3/8"	SM22 143	66	BEARING, THRUST	SM20198
16	WHEEL, 3" DIA.	SM25978	67	ASSY, SPROCKET LH	SM10382
17	PIN,HITCH	SM21774	68	(CS)ASSY,DRIVE,HUB	SM10400
18	PIN,CLEVIS	SM22326	69	ASSY, SPROCKET RH	SM10383
19	SCREW,# 10-24 X . 38 ZINC PLATED	SM22 15 0	70	(CS)ASSY,DRIVE HUB & SHAFT	SM10485
20	(CS)MAINFRAME,STD,4600,BLK	SM18029-0 3	71	(CS)ASSY,ECCENTRIC SHAFT	SM24897
21	(CS)MAINFRAME,INT,4600,BLK	SM18032-03	72	(CS)ASSY,SPROCKET,80T	SM22618
22	(CS)MAINFRAME,STD,4600,SILVER	SM25872	73	KIT,FIRST REDUCTION	SM40216K
23	(CS)MAINFRAME,INT'L,4600, SILVER	SM25873	74	BEARING,NEDL,DRWN CUP, 17x2 3x12	SM24747
24	MOUNT, SHOCK	SM20188	75	WASHER,688 I.D. X . 125 THICK	SM21657
26	CHAIN,TRANSMISSION,4200/4400	SM22347	76	SCREW,SET,SOCKET,,2 50-28 X . 38	SM22878
27	SUPPRESSOR, FERRITE TOROID	SM27839	77	SPROCKET, BS 14 #4 1 CHAIN	SM20006
28	ASSY CABLE, CONTACT HR 4600	SM27840	78	RING,SNAP, 5/8",ZINC PLATED	SM22 141
29	WASHER,SHOULDER,2 5 ID,NYLON	SM22983	79	WASHER,FLAT 1.00 OD X .6 3 ID	SM22140
30	SCREW,,2 50-20 X 4. 50 HEX HD CP	SM21449	80	WASHER,WAVE,.7 51 I.D.	SM12446
31	ASSY,CONSOLE KNOB,4600	SM18027	81	ASSY,PEDAL,RH,CL SYS,V2	SM21793
32	WASHER,,2 50 INTERNL TOOTH LOCK	SM22138	82	WASHER,THRUST,.6 3 ID	SM21366
33	BRACKET,CONSOLE,RIGHT,4600	SM18006-03	83	(CS)ASSY,ARM,PEDAL,RH,PB,BLK	SM 10989-0 3
34	BRACKT,CONSOL,LEFT,4600,NLS, SILVER	SM25530	84	ASSY,ARM,PEDAL,RH,NLS, SILVER	SM25568
35	BRACKET,CONSOLE,LEFT,4600	SM18007	85	(CS)ASSY,ARM,PEDAL,LH, BLK	SM 10990-0 3
36	BRACKT,CONSLE,RIGHT,4600,NLS, SILVER	SM25529	86	ASSY,ARM,PEDAL,LH,NLS, SILVER	SM25567
37	INSERT,NECK,2400/4400	SM21616	87	ASSY,PEDAL,LH,CL SYS,V2	SM21794
38	WASHER,. 31 2 USS FLAT	SM22075	88	RING, SNAP 3/4"	SM202 13
39	SCREW,. 312-18X.7 5,HEX HD CAP	SM22093	89	RING, SNAP 3/8"	SM202 14
40	NUT, 5/16-18 NC NYLON INSRT HEX	SM22032	90	ASSY,ARM,LEVELING,NLS, SILVER	SM25569
41	NUT,#8- 32,NYLON INSERT	SM23054	91	CS)ASSY,ARM,LEVELING, BLACK	SM 10991-03
42	WASHER,#8 SAE FLAT	SM13580	92	KIT, LEVELING ARM UPGRADE, RT, BLK	SM21285K
43	SCREW,. 312-18X 3.00,HEX HD CAP	SM24271	93	KIT, LEVELING ARM UPGRADE, LT, BLK	SM21286K
44	ASSY,LOAD RESISTOR,4400 PT	SM22930	94	KIT,LEVELING ARM,W/PEDAL,RH, SILVER	SM25874
45	WASHER,FLAT,#8 FENDER,	SM23609	95	KIT,LEVELING ARM,W/PEDAL,LH, SILVER	SM25875
46	SCREW,8- 32 NC X .62 PHIL PAN	SM25079	96	RING,SNAP, 3/8",SS, HEAVY DUTY	SM25894
47	BELT,POLY-V,4 30J6	SM2 1518	97	PADS, PEDAL, SET	SM 18054
48	SPRING, PEDAL RETURN	SM21093	98	BOLT, 1/4-20 X .7 5, HEX HEAD	SM25454
49	KIT,MASTER LINK	SM20157	99	ASSY,LEFT HANDRAIL,4600, BLK	SM 18016-03
50	LINK, DOUBLE PITCH W/SLEEVE	SM2 1298	100	ASSY,LH HANDRAIL,NLS, SILVER	SM25595
51	CHAIN,STEP CHN4ON P 37	SM20199	101	ADAPTER,HANDRAIL, 4000 PT/CT	SM20574

Stairmaster 4600 PT

REF #	DESCRIPTION	PART #	REF #	DESCRIPTION	PART #
102	WASHER,,2 50 SPLIT LOCK	SM22027	146	SHAFT,ARM,PEDAL,PRESSFIT	SM24888
103	SCREW,,2 50-20X2. 50,HEX HD CAP	SM22116	147	NUT,, 375-16,NYLON INSERT	SM22029
104	KIT,LH,LOWER COVER,4600PT, GRY	SM 16749	148	KIT,C40 OVERLAY,JAPAN,SLV	SM25892SLV
105	(CS)COVER,RH W/DECAL,4600PT,BLK	SM 18053-06	NOT SHOWN	POWER ADAPTER, 3 PRONG/2 PRONG	SM20859
106	(CS)CVR,W/DECAL,LH,4600PT, CHARCOAL GREY	SM25878	NOT SHOWN	POWER SUPPLY,JAPAN, 3-PIN	SM22910
107	COVER,LEFT NECK,4600, BLK	SM 18025-06	NOT SHOWN	MANUAL 4600 C-40	SM22867
108	COVER,LEFT NECK,4600, GRY	SM 18025-07	NOT SHOWN	TOOL, REMOVAL, COVER FASTENERS	SM23853
109	COVER,LEFT NECK,STEPPER, CHARCOAL GREY	SM25519	NOT SHOWN	POWER SUPPLY,PS-7, 3-PIN	SM24381
110	KIT,RH,LOWER COVER,4600PT, GRY	SM16748			
111	(CS)COVER,RH W/DECAL,4600PT, BLK	SM 18052-06			
112	(CS)CVR,W/DECAL,RH,4600PT, CHARCOAL GREY	SM25879			
113	COVER,RIGHT NECK,4600, BLK	SM 18024-06			
114	COVER,RIGHT NECK,4600, GRY	SM 18024-07			
115	COVER,RIGHT NECK,STEPPER, CHARCOAL GREY	SM25518			
116	ASSY,RIGHT HANDRAIL,4600, BLK	SM 18017-03			
117	ASSY,RH HANDRAIL,NLS,SV, SILVER	SM25596			
118	RIVET KIT (10 PER)	SM22847			
119	XONSOLE,ASSEMBLY,ICHR C40, BLK	SM27819-20			
120	CONSOLE ASSY,ICHR C40,INTERN, BLK	SM27819-99			
121	CONSOLE, ASSY,ICHR, CJ40, JAP, BLK	SM27819-90			
122	CONSOLE ASSY,ICHR C40,INT, GRY	SM - 27819GRY-99			
123	ASSY,CONSOLE,ICHR C40,NLS, CHARCOAL GREY	SM25844			
124	PCBA, DISPLAY, CJ40	SM40070-001			
125	PCB ASSY,C40 PROCESS(M 128)NON-	SM27130			
126	IC, CONTACT HR W/MOUNT HEADER	SM27767			
127	KIT,C40 OVERLAY, (CHARCOAL GREY CONSOLE)	SM25877			
128	KIT, C40 OVERLAY (BLACK CONSOLE)	SM27792			
129	KIT, C40 OVERLAY, INT'L , (INT'L BLACK CONSOLE)	SM27793			
130	SHIELD,TOP,4600	SM 18030			
131	SHIELD,TOP,STEPPER,NLS, CHARCOAL GREY	SM25513			
132	SHIELD,BOTTOM,4600	SM 18031			
133	SHIELD,BOTTOM,STEPPER,NLS, CHARCOAL GREY	SM25512			
134	SCREW,#6 S.T. X .62 5 HEX OR TO	SM22276			
135	GROMMET,NECK,2400/4400	SM21578			
136	(CS)COVER,MID,W/DECALS, BLK	SM24954-06			
137	(CS)CVR,MID,W/DECAL, CHARCOAL GREY	SM25880			
138	RIVET,PANELS, PLASTIC	SM22086			
139	SCREW,,2 50-20NC X 1.75 SOC CAP	SM 18028			
140	SCREW,, 375-16x2.00,HEX HD CAP	SM22258			
141	ADAPTER,HANDRAIL,4600	SM 18008			
144	SCREW,,2 50-20X. 50 BUTTON HD CP	SM25244			
142	WIREFORM ASSY, WATER BOTTLE	SM27783-03			
143	WIREFORM,MAGAZINE HOLDER	SM27791-03			
145	ICHR, GEN II	SM 12294K			

STAIRMASTER

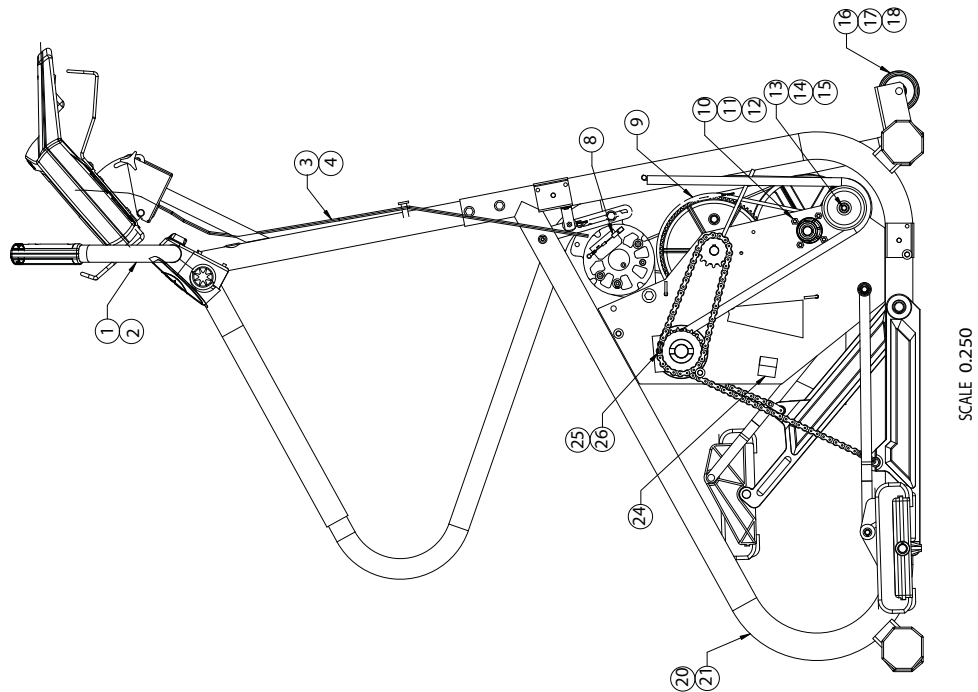
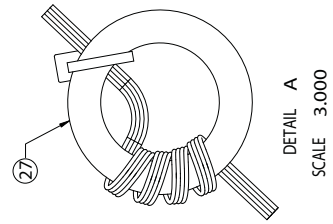
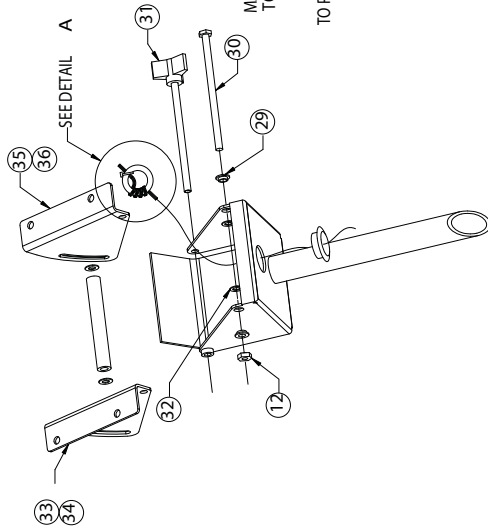
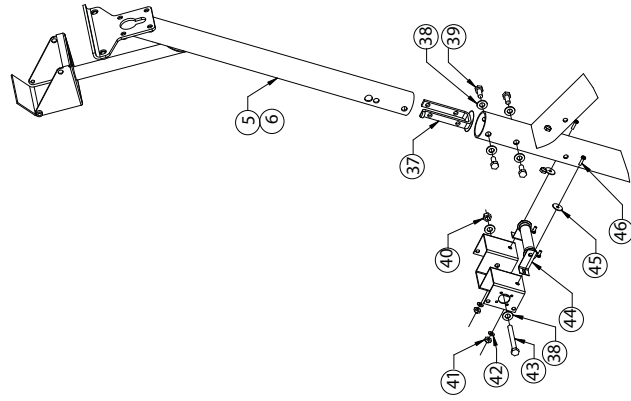
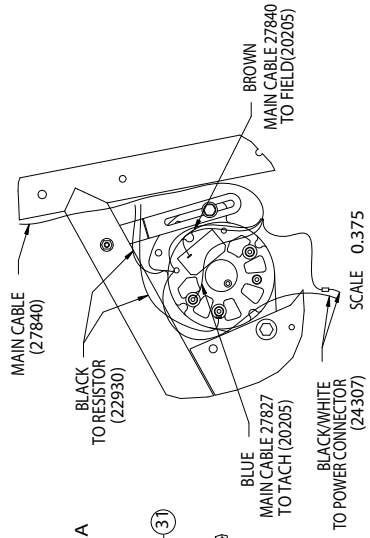
4600PT Stepper

Parts Diagram

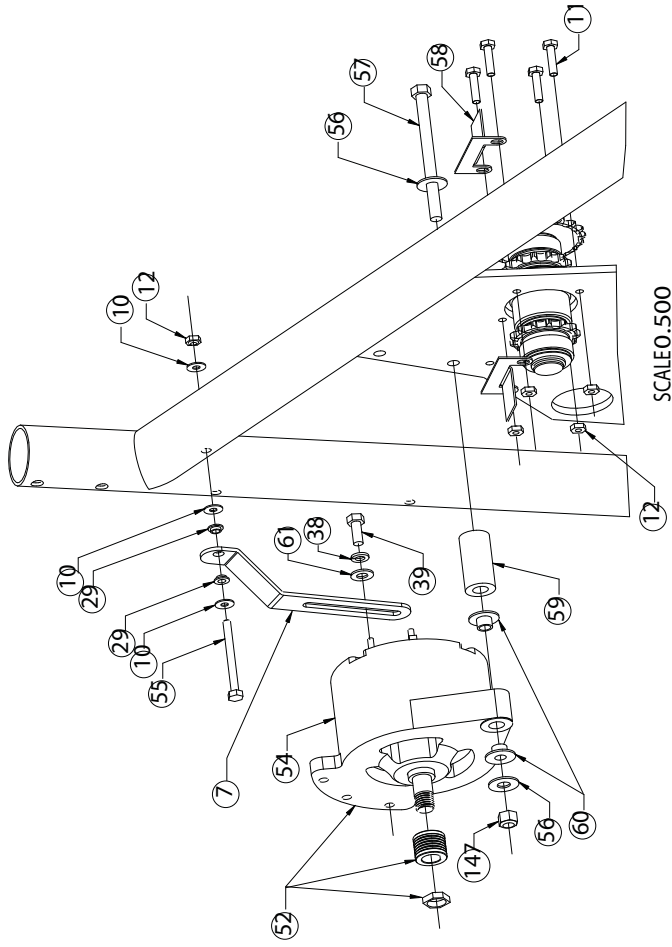
2008

Pages 18-25

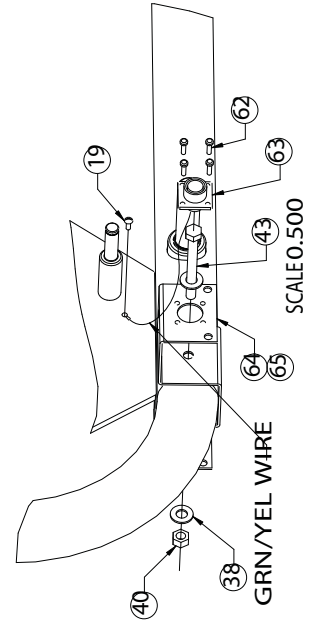
Stairmaster 4600 PT



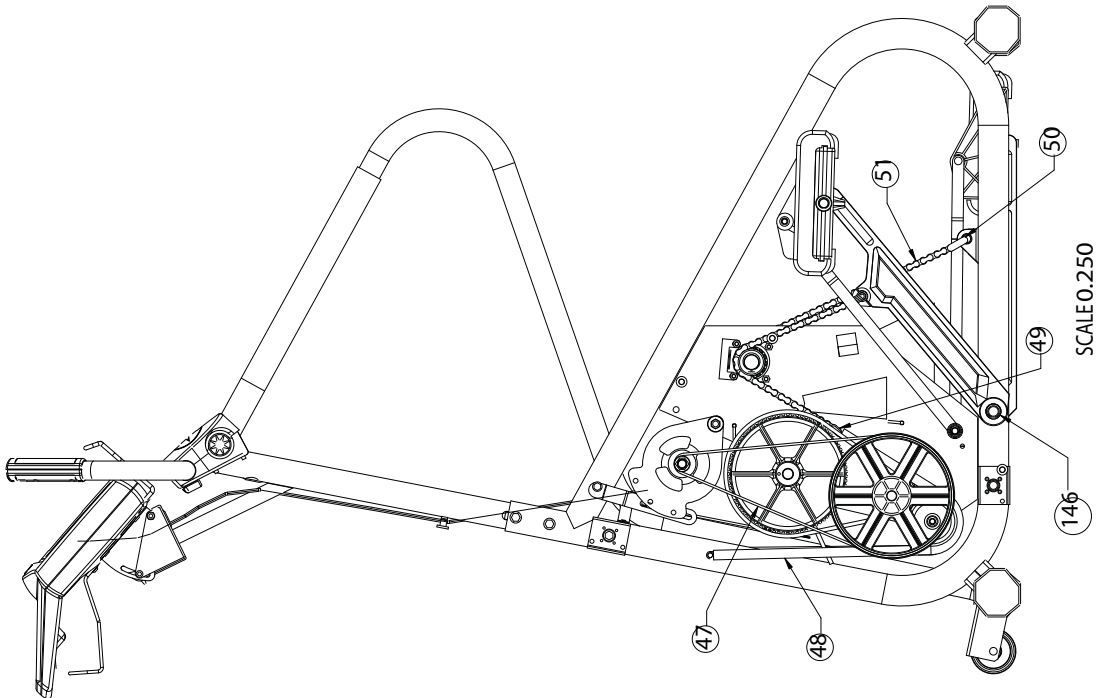
Stairmaster 4600 PT



SCALE 0.500

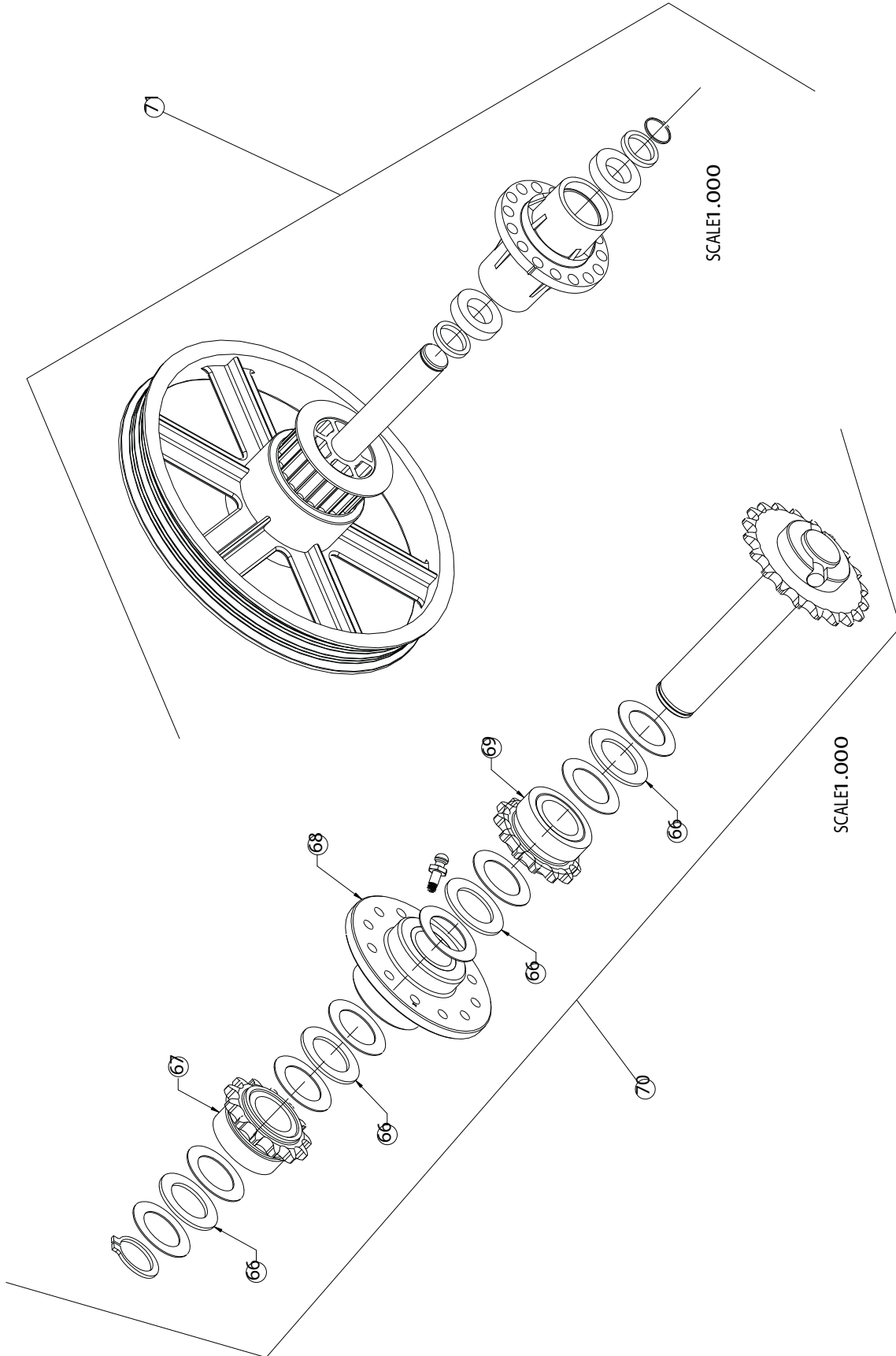


SCALE 0.500

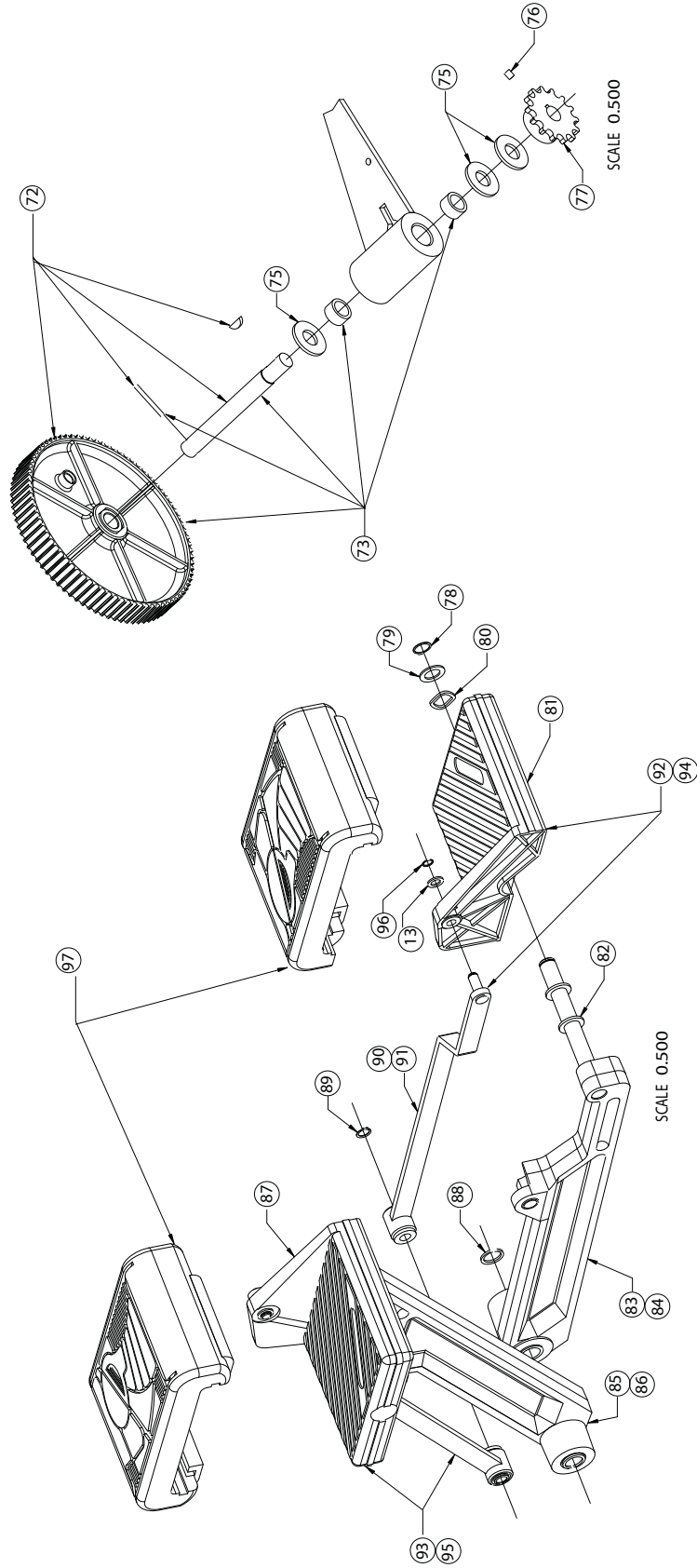


SCALE 0.250

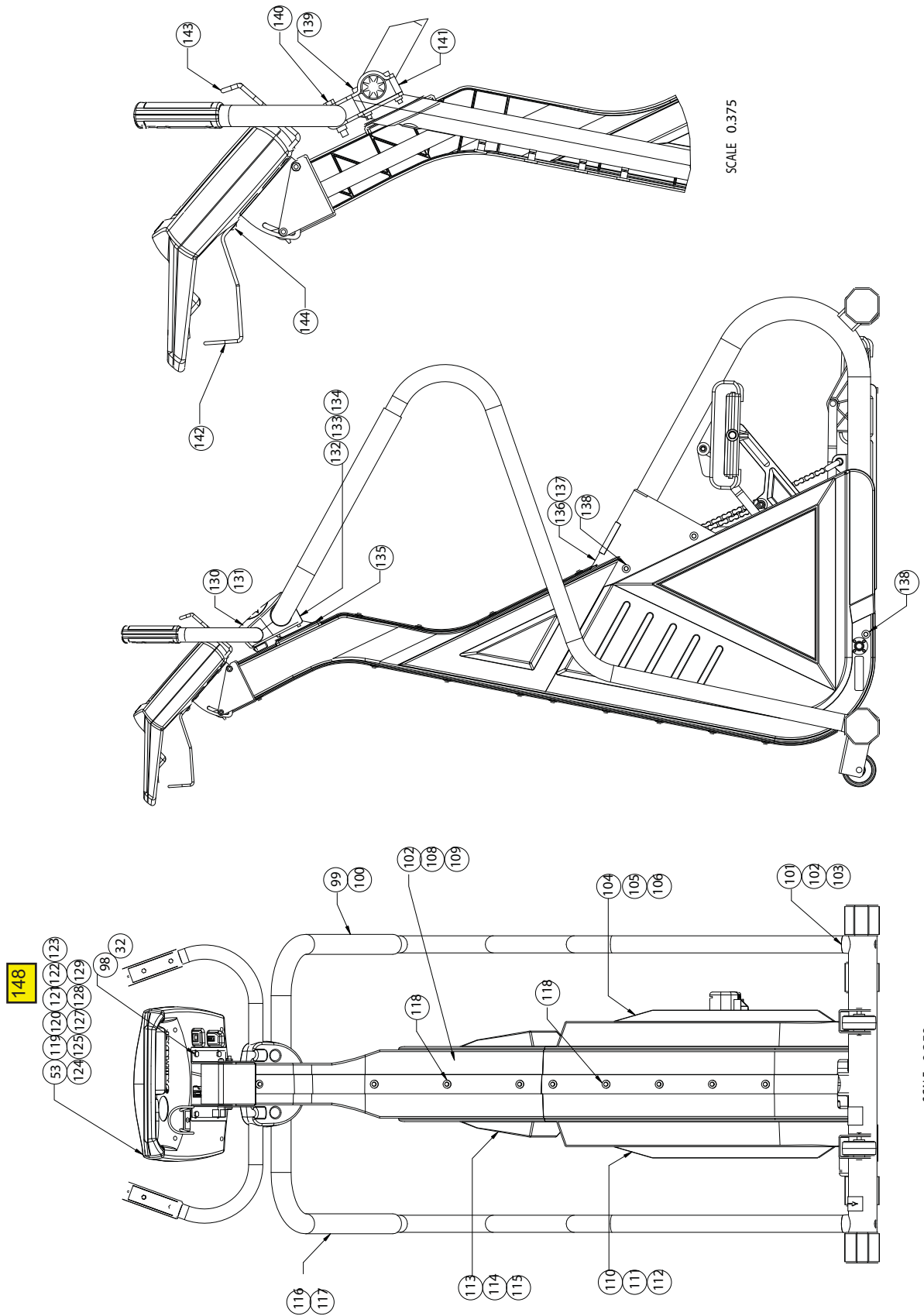
Stairmaster 4600 PT



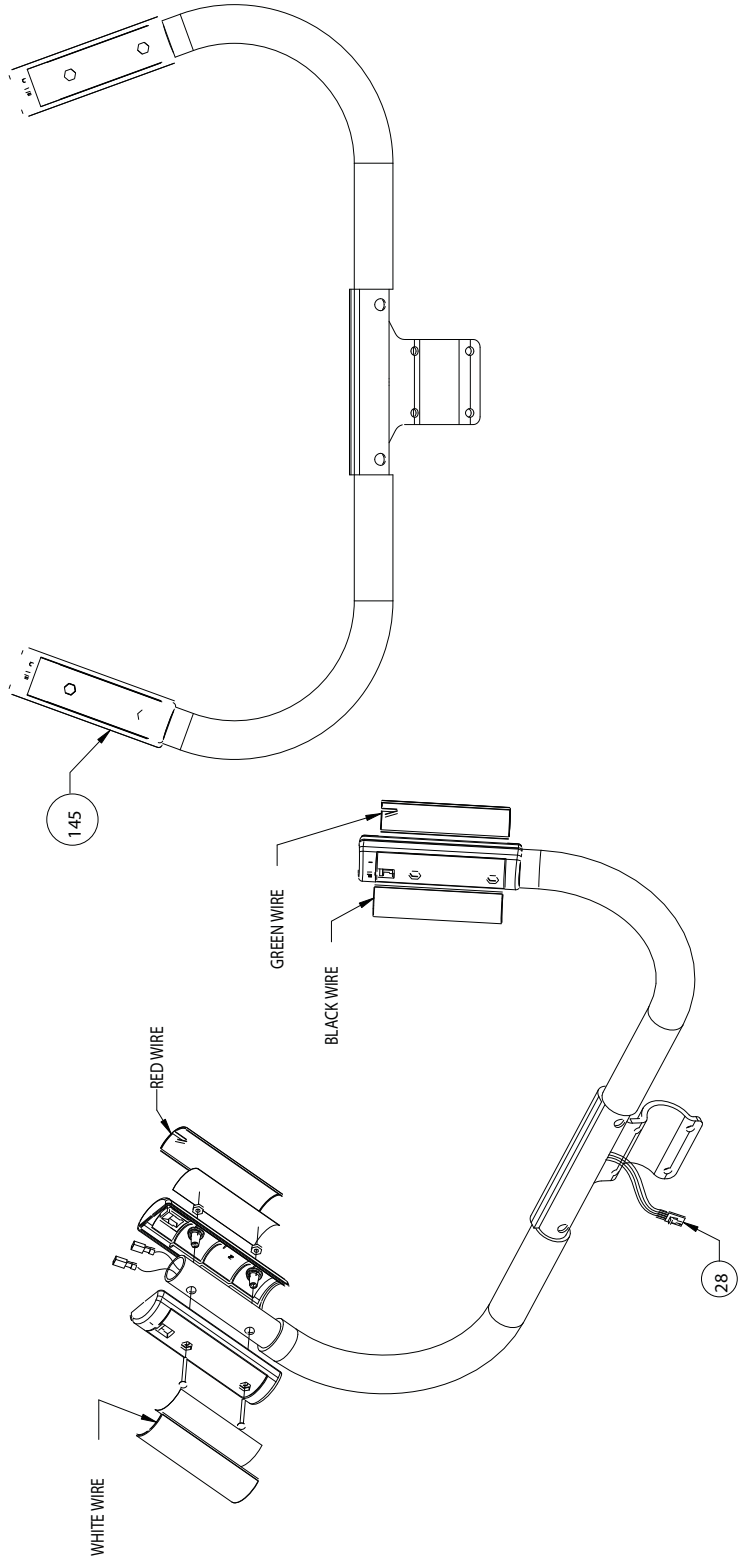
Stairmaster 4600 PT



Stairmaster 4600 PT



Stairmaster 4600 PT



- NOTES:
1. CONNECT WIRES TO CONTACT PLATES AS SHOWN.

Stairmaster 4600 PT

REF #	DESCRIPTION	PART #	REF #	DESCRIPTION	PART #
1	ASSEMBLY HANDLE, UPPER 4600, BLK	SM12297-0 3	52	(CS)ASSY,ALT. PULLEY,4400PT T2	SM21508
2	ASSY,HNDLE,UPPER,STPPR,NLS, SILVER	SM25592	53	KIT, C40 OVERLAY, JAPANESE (BLACK CONSOLE)	SM27801
3	ASSY,MAIN CABLE,4400 PT,HM, PRE 8/01	SM21417	54	ALTERNATOR,PRESTOLITE, 1992	SM20205
4	ASSY,CABLE, C40 4400/4600PT, AFTER 8/01	SM27827	55	SCREW,.2 50-20X 3.00,HEX HD CAP	SM22175
5	WELDMENT,NECK,4600, BLK	SM18002-0 3	56	WASHER, 3/8 USS FLAT	SM22030
6	WELDMENT,NECK,STEPPER,NLS, SILVER	SM25594	57	SCREW,. 375-16 x 4. 50 HEX HD CP	SM21448
7	BRACE,ALTERNATOR,4400 PT/CL,WB	SM21590-0 3	58	RETAINER, PEDAL CHAIN	SM21192
8	ASSY,FIELD,DIODE	SM21204	59	SPACER,ALTERNATOR,4400 PT/CL	SM21592-0 5
9	BELT,HTD,8MM,800MM LONG	SM21529	60	WASHER,SHOULDER,. 38 I.D.	SM22191
10	WASHER,FLAT, 1/4 ID X 5/8 OD	SM22047	61	WASHER,. 31 2 SPIT LOCK	SM22070
11	SCREW,.2 50-20X 1.00,HEX HD CAP	SM22026	62	SCREW,#6 X . 50 PHIL,TYPE T	SM22663
12	NUT,.2 50-20,NYLON INSERT	SM22036	63	ASSY,MAIN POWER HARNESS	SM24307
13	WASHER,FLAT, .3/8,SS	SM21462	64	BRACKET,MNT,CVR,CL SYS,CL,W/B	SM24666
14	PULLEY,SPRING,4200/4400	SM21519	65	BRACKET,MNT,CVR,CL SYS,CL, SILVER	SM25845
15	RING,SNAP, 3/8"	SM22143	66	BEARING, THRUST	SM20198
16	WHEEL, 3" DIA.	SM25978	67	ASSY, SPROCKET LH	SM10382
17	PIN,HITCH	SM21774	68	(CS)ASSY,DRIVE,HUB	SM10400
18	PIN,CLEVIS	SM22326	69	ASSY, SPROCKET RH	SM10383
19	SCREW,# 10-24 X . 38 ZINC PLATED	SM22150	70	(CS)ASSY,DRIVE HUB & SHAFT	SM10485
20	(CS)MAINFRAME,STD,4600,BLK	SM18029-0 3	71	(CS)ASSY,ECCENTRIC SHAFT	SM24897
21	(CS)MAINFRAME,INT,4600,BLK	SM18032-0 3	72	(CS)ASSY,SPROCKET,80T	SM22618
22	(CS)MAINFRAME,STD,4600,SILVER	SM25872	73	KIT,FIRST REDUCTION	SM40216K
23	(CS)MAINFRAME,INT'L,4600, SILVER	SM25873	74	BEARING,NEDL,DRWN CUP, 17x2 3x12	SM24747
24	MOUNT, SHOCK	SM20188	75	WASHER,688 I.D. X . 125 THICK	SM21657
26	CHAIN,TRANSMISSION,4200/4400	SM22347	76	SCREW,SET,SOCKET,.2 50-28 X . 38	SM22878
27	SUPPRESSOR, FERRITE TOROID	SM27839	77	SPROCKET, BS14 #4 1 CHAIN	SM20006
28	ASSY CABLE, CONTACT HR 4600	SM27840	78	RING,SNAP, 5/8",ZINC PLATED	SM22141
29	WASHER,SHOULDER,.25 ID,NYLON	SM22983	79	WASHER,FLAT 1.00 OD X .6 3 ID	SM22140
30	SCREW,.250-20 X 4. 50 HEX HD CP	SM21449	80	WASHER,WAVE,.751 I.D.	SM12446
31	ASSY,CONSOLE KNOB,4600	SM18027	81	ASSY,PEDAL,RH,CL SYS,V2	SM21793
32	WASHER,.250 INTERNL TOOTH LOCK	SM22138	82	WASHER,THRUST,.6 3 ID	SM21366
33	BRACKET,CONSOLE,RIGHT,4600	SM 18006-03	83	(CS)ASSY,ARM,PEDAL,RH,PB,BLK	SM10989-0 3
34	BRACKT,CONSOL,LEFT,4600,NLS, SILVER	SM25530	84	ASSY,ARM,PEDAL,RH,NLS, SILVER	SM25568
35	BRACKET,CONSOLE,LEFT,4600	SM18007	85	(CS)ASSY,ARM,PEDAL,LH, BLK	SM10990-0 3
36	BRACKT,CONSLE,RIGHT,4600,NLS, SILVER	SM25529	86	ASSY,ARM,PEDAL,LH,NLS, SILVER	SM25567
37	INSERT,NECK,2400/4400	SM21616	87	ASSY,PEDAL,LH,CL SYS,V2	SM21794
38	WASHER,. 31 2 USS FLAT	SM22075	88	RING, SNAP 3/4"	SM20213
39	SCREW,. 312-18X.7 5,HEX HD CAP	SM22093	89	RING, SNAP 3/8"	SM20214
40	NUT, 5/16-18 NC NYLON INSRT HEX	SM22032	90	ASSY,ARM,LEVELING,NLS, SILVER	SM25569
41	NUT,#8-32,NYLON INSERT	SM23054	91	CS)ASSY,ARM,LEVELING, BLACK	SM10991-03
42	WASHER,#8 SAE FLAT	SM13580	92	KIT, LEVELING ARM UPGRADE, RT, BLK	SM21285K
43	SCREW,. 312-18X 3.00,HEX HD CAP	SM24271	93	KIT, LEVELING ARM UPGRADE, LT, BLK	SM21286K
44	ASSY,LOAD RESISTOR,4400 PT	SM22930	94	KIT,LEVELING ARM,W/PEDAL,RH, SILVER	SM25874
45	WASHER,FLAT,#8 FENDER,	SM23609	95	KIT,LEVELING ARM,W/PEDAL,LH, SILVER	SM25875
46	SCREW,8-32 NC X .62 PHIL PAN	SM25079	96	RING,SNAP, 3/8", HEAVY DUTY	SM25894
47	BELT,POLY-V,4 30J6	SM21518	97	PADS, PEDAL, SET	SM18054
48	SPRING, PEDAL RETURN	SM21093	98	BOLT, 1/4-20 X .7 5, HEX HEAD	SM25454
49	KIT,MASTER LINK	SM20157	99	ASSY,LEFT HANDRAIL,4600, BLK	SM18016-03
50	LINK, DOUBLE PITCH W/SLEEVE	SM21298	100	ASSY,LH HANDRAIL,NLS, SILVER	SM25595
51	CHAIN,STEP CHN40N P 37	SM20199	101	ADAPTER,HANDRAIL, 4000 PT/CT	SM20574

Stairmaster 4600 PT

REF #	DESCRIPTION	PART #	REF #	DESCRIPTION	PART #
102	WASHER,.250 SPLIT LOCK	SM22027	146	SHAFT,ARM,PEDAL,PRESSFIT	SM24888
103	SCREW,.250-20X2.50,HEX HD CAP	SM22116	147	NUT,.375-16,NYLON INSERT	SM22029
104	KIT,LH,LOWER COVER,4600PT, GRY	SM 16749	148	KIT, C40 OVERLAY,JAPAN,SILVER	SM25892SLV
105	(CS)COVER,LH W/DECAL,4600PT,BLK	SM18053-06	NOT SHOWN	POWER ADAPTER, 3 PRONG/2 PRONG (MEANT TO BE USED WITH SM22910)	SM20859
106	(CS)CVR,W/DECAL,LH,4600PT, CHARCOAL GREY	SM25878	NOT SHOWN	POWER SUPPLY, 3-PIN (JAPAN)	SM22910
107	COVER,LEFT NECK,4600, BLK	SM18025-06	NOT SHOWN	MANUAL 4600 C-40	SM22867
108	COVER,LEFT NECK,4600, GRY	SM18025-07	NOT SHOWN	TOOL, REMOVAL, COVER FASTENERS	SM23853
109	COVER,LEFT NECK,STEPPER, CHARCOAL GREY	SM25519	NOT SHOWN	POWER SUPPLY,PS-7, 3-PIN (DOMESTIC)	SM24381
110	KIT,RH,LOWER COVER,4600PT, GRY	SM16748			
111	(CS)COVER,RH W/DECAL,4600PT, BLK	SM18052-06			
112	(CS)CVR,W/DECAL,RH,4600PT, CHARCOAL GREY	SM25879			
113	COVER,RIGHT NECK,4600, BLK	SM18024-06			
114	COVER,RIGHT NECK,4600, GRY	SM18024-07			
115	COVER,RIGHT NECK,STEPPER, CHARCOAL GREY	SM25518			
116	ASSY,RIGHT HANDRAIL,4600, BLK	SM18017-03			
117	ASSY,RH HANDRAIL,NLS,SV, SILVER	SM25596			
118	RIVET KIT (10 PER)	SM22847			
119	XONSOLE,ASSEMBLY,ICHR C40, BLK	SM27819-20			
120	CONSOLE ASSY,ICHR C40,INTERN, BLK	SM27819-99			
121	CONSOLE, ASSY,ICHR, CJ40, JAP, BLK	SM27819-90			
122	CONSOLE ASSY,ICHR C40,INT, GRY	SM - 27819GRY-99			
123	ASSY,CONSOLE,ICHR C40,NLS, CHARCOAL GREY	SM25844			
124	PCBA, DISPLAY, CJ40	SM40070-001			
125	PCB ASSY,C40 PROCESS(M128)NON-	SM27130			
126	IC, CONTACT HR W/MOUNT HEADER	SM27767			
127	KIT,C40 OVERLAY, (CHARCOAL GREY CONSOLE)	SM25877			
128	KIT, C40 OVERLAY (BLACK CONSOLE)	SM27792			
129	KIT, C40 OVERLAY, INT'L, (INT'L BLACK CONSOLE)	SM27793			
130	SHIELD,TOP,4600	SM18030			
131	SHIELD,TOP,STEPPER,NLS, CHARCOAL GREY	SM25513			
132	SHIELD,BOTTOM,4600	SM18031			
133	SHIELD,BOTTOM,STEPPER,NLS, CHARCOAL GREY	SM25512			
134	SCREW,#6 S.T. X .625 HEX OR TO	SM22276			
135	GROMMET,NECK,2400/4400	SM21578			
136	(CS)COVER,MID,W/DECALS, BLK	SM24954-06			
137	(CS)CVR,MID,W/DECAL, CHARCOAL GREY	SM25880			
138	RIVET,PANELS, PLASTIC	SM22086			
139	SCREW,.250-20NC X 1.75 SOC CAP	SM18028			
140	SCREW,.375-16x2.00,HEX HD CAP	SM22258			
141	ADAPTER,HANDRAIL,4600	SM18008			
144	SCREW,.250-20X.50 BUTTON HD CP	SM25244			
142	WIREFORM ASSY, WATER BOTTLE	SM27783-03			
143	WIREFORM,MAGAZINE HOLDER	SM27791-03			
145	ICHR, GEN II	SM12294K			